



# SmartStar<sup>®</sup> MiniTower Pro<sup>™</sup>

## Instruction Manual

# Table of Content

|  |    |
|--|----|
| Table of Content .....                     | 2  |
| 1. MiniTower™ Overview.....                | 4  |
| 1.1. MiniTower™ Features.....              | 4  |
| 1.2. MiniTower™ Components .....           | 7  |
| 2. MiniTower™ Assembly .....               | 8  |
| 2.1. MiniTower Assembly .....              | 8  |
| 2.2. OTA Mounting and Balancing.....       | 10 |
| 2.3. Operate a MiniTower on Batteries..... | 11 |
| 3. GOTONOVA™ 8401 Hand Controller.....     | 12 |
| 3.1. Key Description .....                 | 12 |
| 3.2. The LCD Screen .....                  | 13 |
| 3.3. Connection to a Computer .....        | 13 |
| 4. Getting Started .....                   | 14 |
| 4.1. Level and Align the Mount.....        | 14 |
| 4.1.1. Level the Mount.....                | 14 |
| 4.1.2. Initial Positions .....             | 14 |
| 4.2. Setting Up the Mount.....             | 14 |
| 4.2.1. Set Up Time Zone.....               | 15 |
| 4.2.2. Set Up Daylight Saving Time.....    | 16 |
| 4.2.3. Set Mount Type.....                 | 16 |
| 4.2.4. Set Anti-backlash.....              | 16 |
| 4.2.5. Go to the Moon .....                | 17 |
| 4.2.6. Initial Star Alignment .....        | 17 |
| 4.3. Turn Off the Mount.....               | 17 |
| 5. Use the MiniTower .....                 | 17 |
| 5.1. Manual Operation of a Telescope.....  | 17 |
| 5.2. Slew to an Object.....                | 18 |
| 5.2.1. Planets, Sun, Moon .....            | 18 |
| 5.2.2. Deep sky objects .....              | 18 |
| 5.2.3. Comets .....                        | 18 |
| 5.2.4. Asteroids .....                     | 18 |
| 5.2.5. Stars: .....                        | 18 |
| 5.2.6. Constellations.....                 | 18 |
| 5.2.7. User Objects.....                   | 18 |
| 5.2.8. Enter R.A. DEC .....                | 19 |
| 5.3. Sync to Target.....                   | 19 |
| 5.4. Electric Focuser .....                | 19 |
| 5.5. Set Up Controller .....               | 19 |
| 5.5.1. Set Up Local Time .....             | 19 |
| 5.5.2. Set Up Site .....                   | 19 |
| 5.5.3. Set N/S Hemisphere.....             | 19 |
| 5.5.4. Set Display Contrast .....          | 19 |
| 5.5.5. Set Eyepiece Light .....            | 19 |
| 5.5.6. Set Backlight.....                  | 19 |

|  |    |
|--|----|
| 5.5.7. Set Anti-backlash .....                                   | 19 |
| 5.5.8. Set Key Beep.....   | 19 |
| 5.5.9. Set Mount Type.....                                       | 19 |
| 5.5.10. Reset All.....   | 19 |
| 5.5.11. Update Firmware .....                                    | 20 |
| 5.5.12. Set gear ratio .....                                     | 20 |
| 5.5.13. Set Language.....  | 20 |
| 5.6. Align .....   | 20 |
| 5.6.1. One Star Align .....                                      | 20 |
| 5.6.2. Two Star Align.....                                       | 20 |
| 5.6.3. Three-Star Align .....                                    | 20 |
| 5.6.4. Dis R.A axis error .....                                  | 20 |
| 5.6.5. Test Anti-backlash .....                                  | 20 |
| 5.6.6. Polaris Position .....                                    | 20 |
| 5.7. PEC Option .....  | 20 |
| 5.8. Set Up Tracking .....                                       | 21 |
| 5.9. User Objects.....   | 21 |
| 5.10. Auto Guide.....  | 21 |
| 5.11. Park Scope .....   | 21 |
| 5.12. To Park Position.....                                      | 21 |
| 6. Maintenance and Servicing.....                                | 21 |
| 6.1. Maintenance.....  | 21 |
| 6.2. Troubleshooting .....                                       | 21 |
| 6.3. iOptron Customer Service.....                               | 22 |
| Appendix A. Technical Specifications .....                       | 23 |
| Appendix B. GOTONOVA™ 8401 HC MENU STRUCTURE.....                | 24 |
| Appendix C. GOTONOVA™ Star List.....                             | 26 |
| Appendix D. Set Up USB-PC Connection .....                       | 31 |
| Appendix E. Firmware Upgrade .....                               | 38 |
| Appendix F. Use a PC to Control an iOptron Mount .....           | 41 |
| Appendix G. RS-232 Command Set.....                              | 42 |
| IOPTRON TWO YEAR TELESCOPE, MOUNT, AND CONTROLLER WARRANTY ..... | 47 |



**WARNING!**

***NEVER USE A TELESCOPE TO LOOK AT THE SUN!  
Looking at or near the Sun will cause instant and irreversible damage to your eye.  
Children should always have adult supervision while observing.***

# 1. MiniTower Pro™ Overview

## 1.1. MiniTower Pro™ Features

MiniTower Pro™ is the perfect combination of capacity and portability.

### 33 lbs of Payload

Born out of the popular iOptron Cube™, The MiniTower Pro™ is the ultimate observing

solution for people who are searching for a capable and portable GOTO telescope mount to counter light pollution in their backyards and for travel convenience. With a standard payload of 33 lbs, a rock solid 2" stainless steel tripod, metal worm and gear and two dovetail adaptors, The MiniTower Pro™ is capable of handling various optical tube assemblies (OTAs). A 10-lbs counter weight and a secondary dovetail holder are provided for balancing an OTA weights more than 10 lbs, or for a secondary OTA.



Figure 1. MiniTower Pro Mount and Tripod

### Extremely Portable

With all the standard components (excluding the tripod) fitted in an aluminum alloy metal case, The MiniTower Pro™ can easily travel in a car or taken as airline

luggage. The system takes about 10 minutes to assemble. This unlimited portability combined with the internal GPS gives amateur astronomers real flexibility in selecting an observing site.



Figure 2. MiniTower Pro in an aluminum case

### **Accurate GOTO and Tracking**

Equipped with our SmartStar® GOTO technology, the MiniTower Pro™ is one of the most powerful and accurate GOTO mounts available on the market. The standard 8401 hand controller offers a superb navigation experience with an 8-line LCD backlit display, a 130,000-object database, and a USB port for easy

connection with ASCOM compliant PC planetarium programs. With a typical GOTO accuracy of 1 arc minute and the SmartStar® precision auto-tracking, The MiniTower Pro™ will consistently bring the celestial object of your choice to the center of the eyepiece and keep tracking for hours.

### Additional Unique Features

Equipped with additional features such as automatic over-current protection, automatic clutch protection for both axes, easy 3-point

level adjustment, dual scope setup with two dovetails and more-- The MiniTower Pro™ is one of the most user-friendly GOTO mounts available today.



Figure 3. MiniTower Pro with dual scope setup

## 1.2. MiniTower Pro™ Components<sup>1</sup>

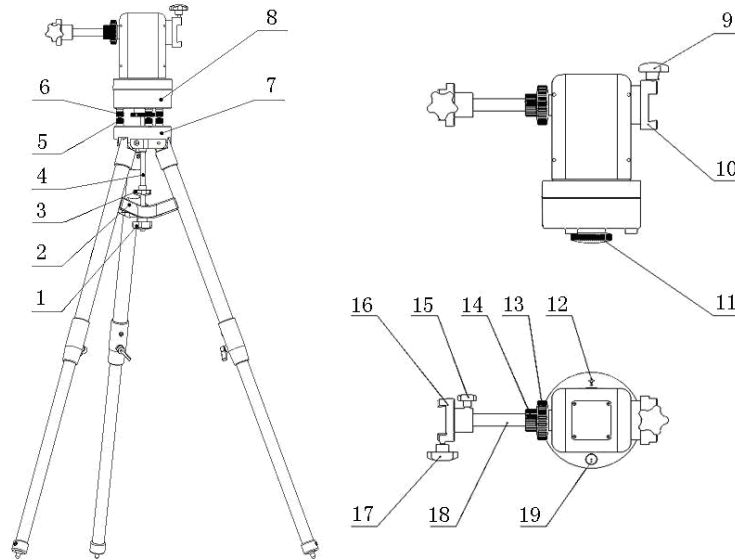


Figure 4. MiniTower Pro Components

### **Shown in the picture:**

- |   |                                      |
|---|--------------------------------------|
| 1. Tripod Lock  | 10. Primary Dovetail Holder          |
| 2. Tripod Support   | 11. Azimuth Clutch Lock              |
| 3. Tripod Knob  | 12. South Alignment Mark             |
| 4. Tripod Rod   | 13. Altitude Clutch Lock             |
| 5. Level Adjustment Lock <i>(not included with MiniTower Pro)</i> | 14. Counter Balance Shaft Lock       |
| 6. Level Adjustment Screw   | 15. Secondary Dovetail Holder Lock   |
| 7. Tripod   | 16. Secondary Dovetail Holder        |
| 8. Mount Base   | 17. Secondary Dovetail Lock          |
| 9. Primary Dovetail Lock  | 18. Retractable Counter Weight Shaft |
|   | 19. Bubble Level Indicator           |

### **Not shown in picture:**

- 8401 Hand Controller
- Controller Cable
- AC Adapter
- 12V DC Adapter with Car Lighter Plug
- USB Cable
- Counter Weight
- Counter Weight Lock Pin
- Counter Weight Lock
- Hard Travel Case

<sup>1</sup> The contents may vary slightly by generation.

## 2. MiniTower Pro™ Assembly

There are two shipping boxes. One box contains the hard case and mount components. The other box contains the tripod and counterweight.

### 2.1. MiniTower Pro Assembly



Figure 5

1. Setup tripod. Extend tripod legs to full extension. Then lock legs using the lock knobs on sides.

Next expand the legs out to their maximum position.



Figure 6

2. Assemble the three prong washer and azimuth clutch lock (#11) onto the mount base



Figure 7

3. Carefully position telescope mount onto the tripod by aligning the three holes on the bottom of the mount base (#8) to the three level adjustment screws (#6) on the top of the tripod (#7), hold the mount with your hands.

Adjust level adjustment screws (#6) to level the mount using the bubble level on the base.



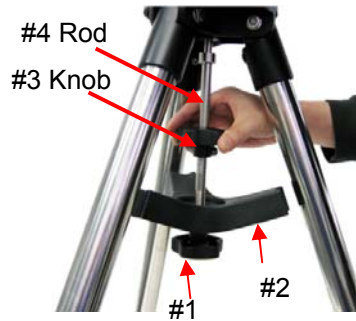


Figure 8

4. Secure the mount to the tripod by using the long tripod rod (#4). Hand tighten the rod into the bottom of the mount by turning the tripod knob (#3).

Next, slide tripod support (#2) onto bottom of rod (#4). Position the three edges to fit against the three tripod legs. Then hand tighten tripod lock knob (#1) to secure the tripod support in place.

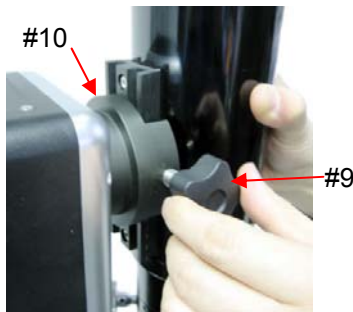


Figure 9

5. Attach an OTA to the primary dovetail holder (#10) using the primary dovetail lock (#9).

Tighten both the azimuth clutch lock (#11) and the altitude clutch lock (#13)



Figure 10

6. Plug one end of supplied 6pin RJ-11 cable into either one of the two HBX (Handbox) sockets on the mount; plug the other end into the GOTO NOVA 8401 hand controller. Plug in 12V power cable.

Turn on power. Now you are ready to observe. Use the 4 Arrow keys (▲▼◀▶) to rotate the scope Up, Down, Left, and Right. Use the number key to change the slew speed from the slowest (1:1X) to the fastest (9:MAX).

The other HBX is reserved for accessories, such as electronic focuser, laser pointer and autoguider adapter. **DO NOT plug non-iOptron accessories into the unit to avoid damaging the mount or accessories.**



Figure 11

7. This step allows you to attach the counterweight or a second scope. (note: if you have a light scope less than 10 lbs. on the primary side, then attaching a counterweight is optional).

First, make sure the altitude clutch lock (#13) is tight. Loose the counter weight shaft lock (#14), pull the counter weight shaft (#18) out and tighten the counter balance shaft lock (#14).



Figure 12



Figure 13

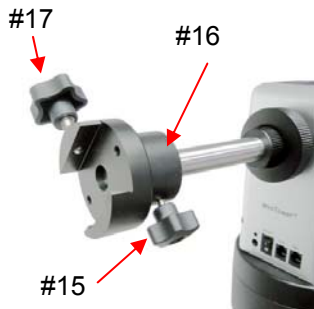


Figure 14

If you are attaching a second scope, do not add the counterweight. **Instead, skip to Step 10 to add a second scope.**

8. Slide the counterweight onto the counterbalance shaft (#18). Next, insert the brass pin into the hole on the counterweight.

9. Secure the counterweight by tightening the lock knob.

**⚠ Counter weight is heavy. Please handle with care to avoid injury!**

*This step is for attaching a second scope.*

10. Attach Secondary Dovetail Holder (#16) by tightening the holder lock (#15) onto the counterweight shaft (#18).

After sliding your scope into the dovetail holder—secure the scope by tightening the secondary lock (#17)

## 2.2. OTA Mounting and Balancing

The iOptron MiniTower Pro™ can handle various OTAs. A dovetail plate is needed to mount an OTA onto the MiniTower Pro mount. The width of the MiniTower Pro™ dovetail holder is 1.75”.

Most telescopes come with a dovetail plate installed on the bottom of the telescope. If the size of dovetail plate does not match unscrew the plate and install an appropriate

dovetail plate that matches the holder. 1.75” dovetail plates are available from iOptron at [www.iOptron.com](http://www.iOptron.com) (part number #8422) or visit an online or local camera store.

Some telescopes may not have screw holes on the bottom. In this case you may need compatible mounting rings to attach the dovetail plate. The size of the mounting rings should match the aperture of your OTA.

The counter weight (CW) is always helpful to balance the OTA in order to have smooth

and accurate GOTO and tracking. The heavier the OTA, the more necessary it is to use a CW. For lightweight OTAs, i.e. 5-6 lbs, however, the CW may not be necessary.

If you have a secondary OTA on the secondary dovetail holder, make sure you align it with the primary OTA. This alignment is done easier during the daytime. Point the primary telescope to a target at a remote building or flagpole and center the target in the eyepiece. Loosen the secondary dovetail holder lock (#15). Rotate the secondary OTA around the counter balance shaft (#18). Center the object in the eyepiece of the secondary OTA. If the secondary OTA is tilted, it can be adjusted by two tilting adjustment screws as shown in Figure 15 (M6 x 12mm Allen set screws, not supplied).

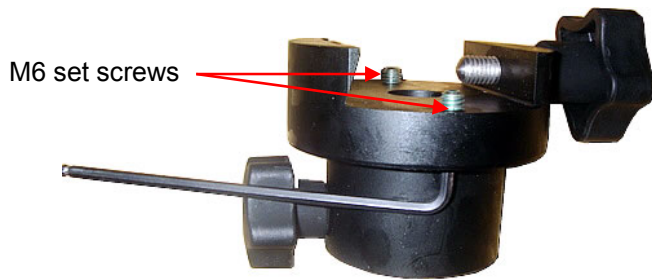


Figure 15. Secondary Dovetail and set screws

A combination of a light OTA and a CW can be used to balance a heavier primary OTA.

### **2.3. Operate a MiniTower Pro on Batteries**

To install batteries open the battery compartment door. Pull the battery holder out from the mount carefully making sure not to pull the wires loose. Insert 8 AA batteries (not included) according to the diagram on the holder. Replace the battery holder back to the battery compartment and replace the cover. (See Figure 16)



Figure 16. Battery compartment for MiniTower Pro™

The mount will draw a significant amount of current when performing GOTO and slew operations. The battery operation time varies depending on the battery quality and operation conditions. It could last from couple of hours to tens of hours. Use only fresh batteries and do not mix fresh and old batteries. Insufficient battery power may cause error messages.

### 3.

## 4. GOTONOVA™ 8401 Hand Controller



Figure 17. GOTONOVA 8401 Hand Controller

GOTONOVA™ 8401 hand controller (HC) is the standard controller for a MiniTower Pro, as shown in Figure 17.

### 4.1. Key Description

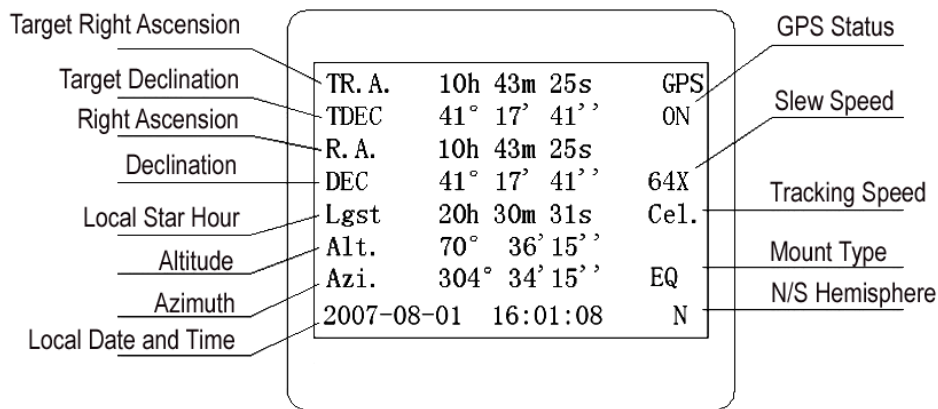
- MENU: Press “MENU” to enter the Main Menu.
- BACK: Move back to the previous screen, or end/cancel current operation, such as slewing.
- ENTER: Confirm an input, go to the next menu, select a choice, or slew the telescope to a selected object.
- Arrow (▲▼▶◀): Press ▲▼ buttons to move a telescope along the DEC direction, ▶◀ to move a telescope along the RA direction. Brows the menu or move the cursor in operating menu.
- Number Keys: Input numerical values. Also used to adjust speeds (1: 1X; 2:

2X; 3: 8X; 4: 16X; 5: 64X; 6: 128X; 7: 256X; 8: 512X; 9: MAX)

- Light Key(☀): Turns on/off the red LED reading light on the back of the controller.
- ? Key: For help or extra information.
- STOP/0 Key: Stop/Start tracking.
- HBX (Handbox) port: connect the HC to MiniTower Pro mount using a 6-wire RJ11 cable.
- USB port: connect the HC to a Computer via a USB cable.

## 4.2. The LCD Screen

The 8401 HC is designed to use for both iOptron's equatorial (EQ) mount, such as the SmartStar®-PR GOTO German Equatorial Mount and the GOTONOVA™ Equatorial Kit, and AltAzimuth (A/A) mount, which includes all SmartStar® GOTO mounts and telescopes. It consists of a large 8-line LCD screen, which displays all the information as shown in Figure 18. The user interface is simple and easy to learn.



**Figure 18. 8401 HC LCD Information Screen**

- GPS status: When the power is turned on, it shows “GPS ON”, which means a GPS receiver is connected. When the GPS receiver finds the satellite and receives GPS signal, it shows “GPS OK”. The “GPS OK” may turn off after few minutes.
- Slew speed: It has 9 speeds: 1X, 2X, 8X, 16X, 64X, 128X, 256X(1°/sec), 512X(2°/sec), MAX(4°/sec).
- Tracking speed: It has 4 speeds: Cel (celestial), Sol (Solar), Lun (Lunar), Def (user defined)
- Mount Type: EQ is equatorial and A/A altazimuth.

## 4.3. Connection to a Computer

The GOTONOVA hand controller has a USB port which can be connected to a computer. This will allow Firmware Upgrading, Database Updating, or Planetarium application. A USB2COM driver is needed to simulate the USB port to a RS-232 serial port. (see Appendix D)

The MiniTower Pro™ can be controlled by a number of popular astronomy software programs. For astronomy software that does not have an embedded iOptron mount driver, an ASCOM driver and related platform are needed. Please refer to Appendix F for more information.

## 5. Getting Started

In order to experience the full GOTO capability of GOTO NOVA technology it is very important to set up the mount correctly before observation.

First, loosen tripod rod (#4) and tripod lock (#1) a little. Then loosen azimuth clutch lock (#11) half turn. Check the bubble level indicator (#19), adjust the level adjustment screws (#6), and center the bubble in the indicator. Turn the mount by a hand and make sure that the mount is leveled on all sides while turning. Adjust the level adjustment screws again if the bubble is not centered while turning.

Tighten the azimuth clutch lock (#11). Tighten the tripod knob (#3). Tighten the

### 5.1.2. Initial Positions

Each time the Mount is turned on, the default position is Parking Position, *i.e.*, altitude is 90°0'0" and azimuth is 180°0'0",

**Face the South.** Align the Mount to south by turning the South mark facing south. An additional compass is needed. There are two ways to do so. One is loosen the azimuth clutch lock (#11) a little and manually turn the Mount to face south. Then tighten the azimuth clutch lock again. The other is turn on the mount. Turn the mount facing south using hand control. Then turn off the power. **Note:** Do not put the compass directly on top of the mount. The motor parts of the mount could affect the pointing accuracy of the compass.

**Point to Zenith.** Unlock the altitude clutch lock (#13) and rotate the telescope to point up directed at the Zenith. A torpedo level may help.

Once it is straight re-tighten the altitude lock to make sure OTA is secure and will not spin.

## 5.1. Level and Align the Mount

### 5.1.1. Level the Mount.

**Leveling is critical for a good GOTO and tracking accuracy.**

tripod lock (#1). Make sure the mount is always leveled.



Figure 19

which means the "SOUTH" mark is pointing to south and the telescope is pointing straight up at the zenith. To set the Park Position, you can:

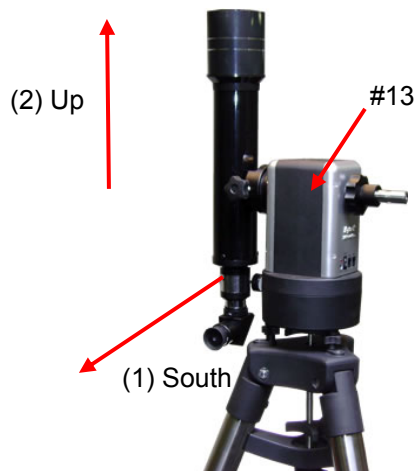


Figure 20

## 5.2. Setting Up the Mount

A MiniTower Pro is equipped with a GPS receiver, which will receive the local time,

longitude and latitude information from satellites after the link is established. However, manual input is still needed for time zone and Daylight Saving setting.

A clear sky outside is needed for GPS to communicate well with the satellites.

### 5.2.1. Set Up Time Zone

Press MENU button, from the main menu, scroll down and select “Set up controller”

```
Select and slew
Sync. to target
Electronic focuser
Set up controller
Align
PEC option
Set up Tracking
User objects
```

Press ENTER. Scroll down and select “Set up site”

```
Set up Local Time
Set up site
Set N/S hemisphere
Set display contrast
Set Eyepiece light
Set Backlight
Set anti-backlash
Set Key Beep
```

Press ENTER. The longitude and latitude coordinates will be updated when the GPS picks up satellite signals. “W/E” means west/east hemisphere; “N/S” means north/south hemisphere; “d” means degree; “m” means minute; and “s” means second.

```
Set up site info:
Longitude:
    W071d27m47s
Latitude:
    N42d15m40s
300 Min. behind UT
```

If for any reason your GPS can’t pick up a signal you can manually enter the GPS coordinates. Press ◀ or ▶ key to move the

cursor and using ▲ or ▼ key to toggle between “W” and “E”, “N” and “S”, using number key to change the numbers. It is always a good idea to do your home work to get the GPS coordinates before traveling to a new observation site.

The site coordinates information can be found from internet, such as GPSVisualizer (<http://www.gpsvisualizer.com/geocode>), by entering the city name or address. In case you only find the site information in decimal format you can convert them into d:m:s format by multiplying the decimal numbers by 60. For example, N47.53 can be changed to N47°31'48":  $47.53^\circ = 47^\circ + 0.53^\circ$ ,  $0.53^\circ = 0.53 \times 60' = 31.8'$ ,  $0.8' = 0.8 \times 60'' = 48''$ . Therefore,  $47.53^\circ = 47^\circ 31' 48''$  or 47d31m48s. Same as N47°31.8':  $31.8' = 31' + 0.8'$ ,  $0.8' = 0.8 \times 60'' = 48''$ .

Press ◀ or ▶ key, move the cursor to the bottom of the screen to set the time zone information (add or subtract 60 minutes per time zone). Enter minutes “ahead of” or “behind” UT (universal time).

- New York City is 300 minutes “behind” UT
- Los Angeles is 480 minutes “behind” UT
- Rome is 60 minutes “ahead of” UT
- Beijing is 480 minutes “ahead of” UT
- Sydney is 600 minutes “ahead of” UT

All the time zones in North America are *behind* UT, as shown in the following table. So make sure it shows “behind” instead of “ahead of” UT.

| Time Zone | Hours behind | Enter Minutes |
|-----------|--------------|---------------|
| Hawaii    | -10          | 600           |
| Alaska    | -9           | 540           |
| Pacific   | -8           | 480           |
| Mountain  | -7           | 420           |
| Central   | -6           | 360           |
| Eastern   | -5           | 300           |

To adjust minutes, move the cursor to each digit and use the number keys to input number directly. To change the “behind” or “ahead of” UT, move the cursor to “ahead” and using ▲ or ▼ key to toggle between “behind” and “ahead”. When the number is correct, press ENTER and go back to the previous screen.

For other parts of the world you can find your “time zone” information online at websites such as <http://www.timeanddate.com/worldclock/>. DO NOT COUNT DAYLIGHT SAVING TIME.

### 5.2.2. Set Up Daylight Saving Time

Scroll up and select “Set up local Time”

```
Set up Local Time
Set up site
Set N/S hemisphere
Set display contrast
Set Eyepiece light
Set Backlight
Set anti-backlash
Set Key Beep
```

Press ENTER.

```
Set local time:

2008-06-01 11:55:09
Daylight Saving Time Y
```

Use the ◀ or ▶ key to move the cursor to the bottom of the screen, use the ▲ or ▼ button to toggle between “Y” and “N”. Press ENTER to go back the previous screen. The local time also can be manually entered in case of GPS malfunction or testing the mount inside.

***The time and site information will be stored inside HC memory chip. If you are not traveling to other observation site, they do not need to be changed.***

### 5.2.3. Set Mount Type

The #8401 hand controller that comes with the MiniTower Pro can function in both EQ and AltAz. For the MiniTower Pro you will need to set the hand controller to function in AltAz. Scroll down and select “Set Mount Type”,

```
Set up site
Set N/S hemisphere
Set display contrast
Set Eyepiece light
Set Backlight
Set anti-backlash
Set Key Beep
Set Mount Type
```

Press Enter.

```
Equatorial Mount
Alt/Azi Mount
```

Select Alt/Azi mount and press ENTER to go back the previous screen.

### 5.2.4. Set Anti-backlash

***For an Alt/Azi operation, both R.A. and DEC anti-backlash should be set to 0 step.*** Scroll down and select “Set anti-backlash”

```
Set up Local Time
Set up site
Set N/S hemisphere
Set display contrast
Set Eyepiece light
Set Backlight
Set anti-backlash
Set Key Beep
```



Press ENTER. A R.A. anti-backlash will display:

```
R.A. anti-backlash:
    0150  steps

One steps equal to
  1.5 arc second.
```

To adjust steps move the cursor to each digit and use the number keys to input number directly. Press ENTER – “DEC anti-backlash” will display:

```
DEC anti-backlash:
    0150  steps

One steps equal to
  1.5 arc second.
```

Move the cursor to each digit and use the number keys to set the anti-backlash to 0. Press ENTER to go back the previous screen.

Press BACK button to go back to main menu.

### 5.2.5. Go to the Moon

After performing these set-ups the mount is ready to GOTO and track objects. One of the most common objects is the Moon.

To slew to the Moon press MENU button. Select “Select and slew” by pressing the ENTER button. Select “Planets, Sun, Moon”, and use the ▲ or ▼ buttons to select Moon. Press ENTER. The telescope will automatically slew to the Moon and lock on. It will automatically begin to track once it locks on. Use the arrow keys to center the Moon in your eyepiece if it is not centered. Or for better performance use Sync to Target (see instructions later).

### 5.2.6. Initial Star Alignment

A simple star alignment/synchronization can be performed to improve the GOTO and tracking accuracy. To do so, after slew the mount to an object, such as Moon, press MENU button, scroll down to “Sync. To Target”, follow the on-screen instruction and press ENTER.

An alternate way is to perform an “Easy One Star Align”. To do so, press MENU button, scroll down to “Align”, select “Easy One Star Align” and press ENTER. The screen will list three bright objects for you to select from (ex. Moon, Jupiter, Venus). Select an object using ▲ or ▼ key. Then press ENTER. Next use the arrow keys to slew to the object until it is centered in your eyepiece. Then press ENTER.

You may need to use the number keys to change the slewing speed to make the centering procedure easier.

## 5.3. Turn Off the Mount

When you are finished observing it is recommended to return the mount to Park Position. If the mount is not moved then no initial set up is needed when you turn on the mount next time. To park the telescope press the MENU button, scroll down to “Park Telescope” and press ENTER. Once the telescope returns to Park Position turn the power off.

## 6. Use the MiniTower Pro

### 6.1. Manual Operation of a Telescope

You may observe land and astronomical objects using GOTO NOVA’s arrow keys.

After the telescope was assembled (referring to Section 2. Telescope Assembly), flip the I/O switch on the telescope mount to turn on the mount. Use ►, ◀, ▼ or ▲ buttons to point the telescope to the desired object. You may need to use

the number keys to change the slewing speed. Simply press a number while slewing to change the slew speed.

## **6.2. Slew to an Object**

Press the MENU button. From the main menu, select “Select and Slew.” Select an object that you would like to observe and press the ENTER key.

The GOTONOVA™ 8401 hand controller has a database of about 130,000 objects. Use the ► or ◀ buttons to move the cursor and the ▼▲ buttons to change the individual number. The check mark (✓) indicates the object is above the horizon, and a cross mark (X) means it is below the horizon. In some catalogs those stars below the horizon will not display on the hand controller.

### **6.2.1. Planets, Sun, Moon**

There are 10 objects in the Solar system catalog.

### **6.2.2. Deep sky objects**

This menu includes objects outside our Solar system such as galaxies, star clusters, quasars, and nebulae.

- Named Deepsky Objects: consists of 60 deep sky objects with their common names. A list of named deep sky objects is attached in Appendix C.
- Messier Catalog: consists of all 110 objects.
- NGC IC Catalog: consists of 7840 objects in NGC catalog and 5386 objects in IC catalog. To select an object from NGC or IC catalog, move the cursor to NGC, using ▲ or ▼ button to toggle between NGC and IC. Then move the cursor to numerical position and use the number button to select the object.
- UGC Catalog: consists of 12939 objects.

- MCG Catalog: consists of 29004 objects. They are listed numerically from MCG+15 to MCG-05.
- Caldwell Catalog: consists of 109 objects.
- Abell Catalog: consists of 2712 objects.
- Herschel Catalog: consists of 400 objects.

### **6.2.3. Comets**

This catalog contains up to 190 comets. This database is customer upgradeable.

### **6.2.4. Asteroids**

This catalog contains up to 4096 asteroids. This database is customer upgradeable.

### **6.2.5. Stars:**

- Named Stars: consists of 191 stars with their common names. They are listed alphabetically. A list is attached in Appendix C.
- Double Stars: consists of 40 double stars. A list is attached in Appendix C.
- GCVS Variable Stars: consists of 38624 GCVS variable stars. They are listed numerically.
- SAO Catalog: consists of 26584 SAO catalog objects. They are listed numerically.

### **6.2.6. Constellations**

This catalog consists of 88 modern constellations with their names. They are listed alphabetically. A list is attached in Appendix C.

### **6.2.7. User Objects**

This catalog can consist up to 256 user predefined objects. These objects need to be entered before they can be selected for slewing.

### **6.2.8. Enter R.A. DEC**

Here you can go to a target by entering its R.A. and DEC numbers.

## **6.3. Sync to Target**

This operation will match the telescope's current coordinates to Target Right Ascension and Declination. After slew to an object, press MENU—then scroll to “Sync to Target” and press ENTER. Follow the screen to do the sync. Using this function will re-calibrate the computer to the selected object. Multiple syncs can be performed if needed.

“Sync to Target” will only work after “Select and slew” is performed. Otherwise, the system may perform incorrectly. You can change the slewing speed to make the centering procedure easier. Simply press a number (1 through 9) to change the speed. The default slew speed is 64X.

“Sync to Target” does the same thing as one star alignment except that you choose the object to “sync” to. One star alignment chooses the star/object for you.

## **6.4. Electric Focuser**

If you have an electric focuser in your system and it is supported by GOTONOVA, use this option to adjust the focuser. Use ◀▶ for coarse tuning and ▼▲ for fine tuning.

Refer to your Electric Focuser operation manual for detailed instruction.

## **6.5. Set Up Controller**

### **6.5.1. Set Up Local Time**

Refer to 4.2.2.

### **6.5.2. Set Up Site**

Refer to 4.2.1.

### **6.5.3. Set N/S Hemisphere**

Set north or south hemisphere.

### **6.5.4. Set Display Contrast**

Use arrow keys to adjust LCD display contrast.

### **6.5.5. Set Eyepiece Light**

If you have an illuminated-reticule eyepiece or illuminated polar scope, and it is supported by GOTONOVA hand controller--use this option to adjust the light intensity.

### **6.5.6. Set Backlight**

Adjust LCD and keypad backlight.

### **6.5.7. Set Anti-backlash**

Use Array Keys to move the cursor and Number Keys to change the number. 0 is suggested for Alt/Azi mount. For an EQ mount, the default setting is 150 for both DEC and R.A.

### **6.5.8. Set Key Beep**

Turn the key beep on/off.

### **6.5.9. Set Mount Type**

Although MiniTower Pro is an Alt/Azi mount the controller can be used for either Equatorial Mount or Alt/Azi Mount. This command changes between the two positions (EQ and AltAz).

### **6.5.10. Reset All**

Reset all settings to factory default data.

### 6.5.11. Update Firmware

Firmware updating using iOptron Downloader through USB port on hand controller. (Refer to Appendix E.)

### 6.5.12. Set gear ratio

Reserved for future products.

### 6.5.13. Set Language

Select hand controller language.

## 6.6. Align

This function is used for aligning the telescope. In addition to “Easy One Star Align,” the system also provides “One Star Align” and “Two Star Align” for Alt/Azi mount. “Three Star Align” is only supported by EQ mode.

### 6.6.1. One Star Align

From the main menu select “Align”. Select “One Star Align”. Use ▲ and ▼ buttons to select a star and press ENTER. A list of align planets or stars that are above the horizon is computed based on your local time and location. Use arrow buttons to move the telescope and center the star in your eyepiece. You can use the number buttons to change the slew speed.

Press ENTER when finished. If your setup is leveled well, one star alignment should be sufficient for good GOTO accuracy. To increase the accuracy you may choose to do two star alignment.

### 6.6.2. Two Star Align

Two star alignment will increase the GOTO accuracy of the mount. It is suggested to do two star alignment after one star alignment. Two star alignment requires a wider view of the sky, since the two align stars need to be far apart. Select “Two Star Align” in the Align menu. When you finish the first star, the system will prompt you to choose the

second star. If the star you choose is too close to the first one, the system will let you choose another one. When you are aligned with the second star, two star alignment is finished. You can reject the suggested star if it is blocked by the tree or behind the house.

“Two Star Align” results will be overridden if “One Star Align” or “Sync. to Target” is performed after “Two Star Align.”

### 6.6.3. Three-Star Align

It will increase the accuracy even higher and requires an even wider view of the sky. This basically asks you to choose a third star to align after two-star align. Three star alignment is not available for Alt/Azi mode.

### 6.6.4. Dis R.A axis error

This only works for EQ mode. This displays the celestial pole point error. Point error is zero when you power on the mount (unless you “Park Telescope” before powering off.

### 6.6.5. Test Anti-backlash

This command tests the backlashes in both R.A. and DEC. The saved numbers will show in “Set Anti-backlash” menu. However, if no high accuracy is needed or your equatorial mount is not a high accuracy unit (*i.e.* the worm gear has different clearance in different positions) you can omit this procedure.

This command only works for EQ mode.

### 6.6.6. Polaris Position

This shows Polaris position.

## 6.7. PEC Option

Periodic Error Correction (PEC) is not supported in Alt/Azi mode.

## 6.8. Set Up Tracking

A user can set up tracking in the main menu by selecting "Set up tracking". Then the user can select "Sidereal speed", "Solar speed", "Lunar speed", and "User defined speed". For "User defined speed" this can be adjusted from 91% to 109% of sidereal speed by pressing the ▲ or ▼ buttons.

## 6.9. User Objects

Besides various star lists available in the hand controller --you can add, edit or delete your own user-defined objects. All data you enter is supposedly J2000.0 epoch.

## 6.10. Auto Guide

This is an advanced function for autoguiding when a guiding scopes and a camera are equipped. The GOTONOVA supports autoguiding through ASCOM protocol, such as PHD Guiding or Guidedog, or an ST-4 guiding camera (an extra ST-4 to HBX adapter is needed). Please follow the guiding software for detailed instructions.

This function is not supported in Alt/Azi mode.

## 6.11. Park Scope

This procedure only needs to be done if you do not move your telescope mount after you power off the GOTONOVA. Celestial pole pointing error will be stored to flash memory and recalled when you power on again.

## 6.12. To Park Position

This moves your telescope to park position. When power is turned on--the mount assumes the physical position is the park position. This is its reference point for all other objects.

# 7. Maintenance and Servicing

## 7.1. Maintenance

The MiniTower Pro is designed to be maintenance free. Do not overload the mount. Do not drop the mount which will damage the mount or affect the GOTO tracking accuracy permanently. Use a wet cloth to clean the mount and hand controller. Do not use solvent.

If your mount is not to be used for an extended period, dismount the OTAs and counterweight. Remove the batteries from the battery holder if they were installed.

## 7.2. Troubleshooting

The following suggestions may be helpful for the operation of the MiniTower Pro. More information can be found in our online FAQ section ([www.iOptron.com](http://www.iOptron.com) then click on "support").

### 1. Error Message "Warning! DEC. (or R.A.) driver motor over current. Please check balance."

- (1) Check if the mount or OTA is blocked by any obstructions.
- (2) Try to operate the mount without an OTA.
- (3) Check the power supply. This is a common reason for this message and **unexpected slew behavior or movement**, which include:
  - **Batteries:** Are the batteries fresh? How long have they been used? (frequent slewing and GOTO will deplete battery power very quickly)
  - **AC or DC adapter:** Check the plugs to the mount and to the power outlet.
  - **Extension cord:** Make sure the cord is in good condition. Power drop along the extension cord has been known to cause this error message. Also check all the plugs and connections.

(4) Check the hand controller cord. Unplug it and re-plug into the other HBX port.

**2. Error Message “Warning! Can not communicate with DEC motor controller.”**

(1) Check the hand controller cord. Unplug it and re-plug into another HBX port.

(2) Check the power supply, which include:

- Using the battery? Is the battery fresh? How long it has been used? (frequent slew and GOTO will deplete battery power very quickly)
- Using AC or DC adapter? Check the plugs to the mount and to the power outlet.
- Using extension cord? Make sure the cord is in good condition. Power drop along the extension cord was known to cause the problem. Also check all the plugs and connections.

**3. The object is jumping up and down in the eyepiece or over-slewed, and other unexpected slew behavior or movement.**

(1) Use most updated firmware.

(2) Set backlash to 0 in both DEC and RA.

(3) Check the power supply, which include:

- Using the battery? Is the battery fresh? How long it has been used? (frequent slew and GOTO will deplete battery power very quickly)
- Using AC or DC adapter? Check the plugs to the mount and to the power outlet.
- Using extension cord? Make sure the cord is in good condition. Power drop along the extension cord was known to cause the problem. Also check all the plugs and connections.

(4) System balancing.

**4. Star Alignment accuracy; GOTO accuracy**

(1) Leveling (very important).

(2) Site information (minutes ahead or behind UT, DST).

(3) System balancing.

(4) Use most updated firmware.

(5) Select right mount type (A/A).

(6) Set backlash to 0 in both DEC and RA.

(7) Check the power supply, which include:

- Using the battery? Is the battery fresh? How long it has been used? (frequent slew and GOTO will deplete battery power very quickly)
- Using AC or DC adapter? Check the plugs to the mount and to the power outlet.
- Using extension cord? Make sure the cord is in good condition. Power drop along the extension cord was known to cause the problem. Also check all the plugs and connections.

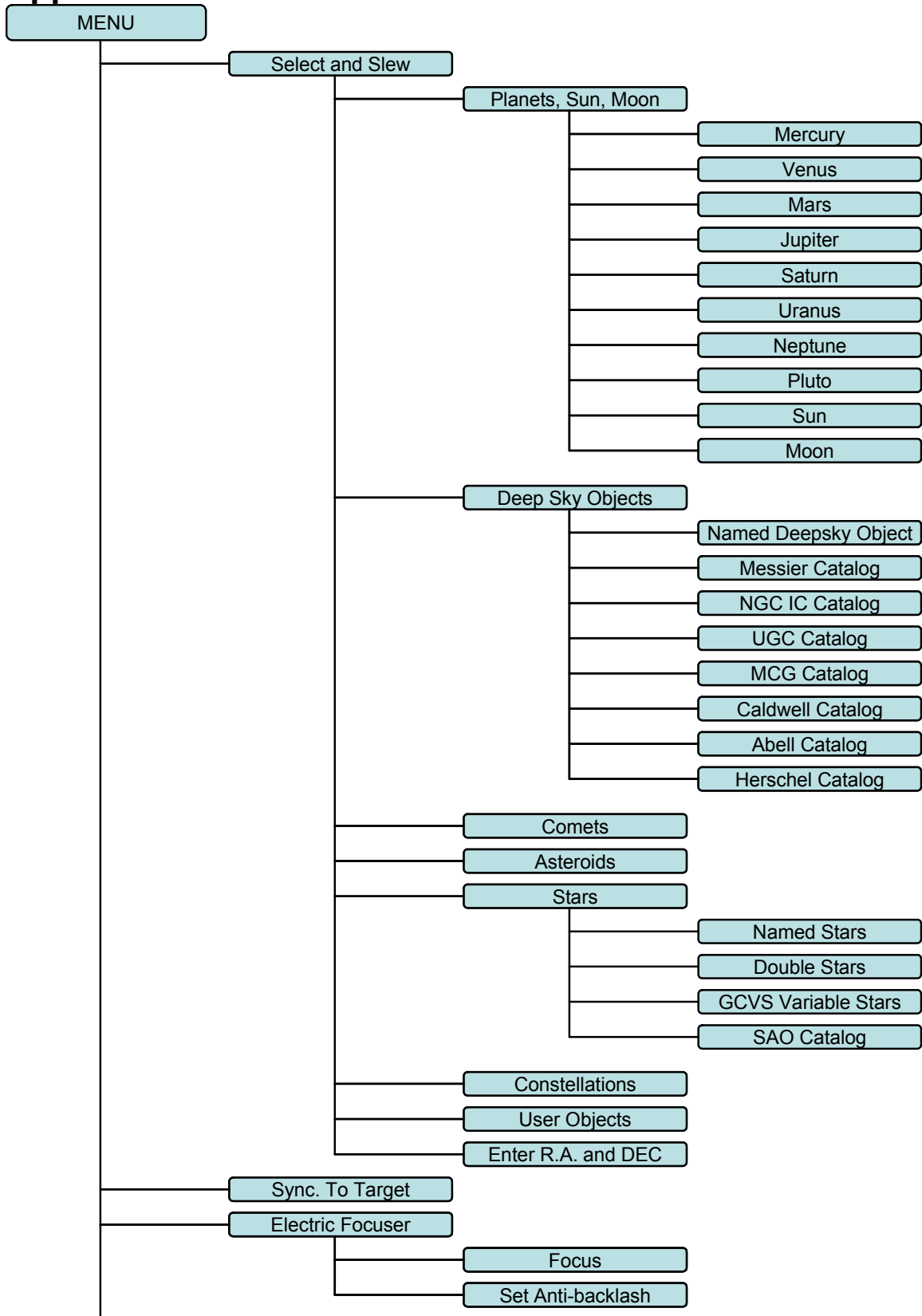
**7.3. iOptron Customer Service**

If you have a question concerning your MiniTower Pro contact the iOptron Customer Service Department. Customer Service hours are 9:00 AM to 5:00 PM, Eastern Time, Monday through Friday. In the unlikely event that the MiniTower Pro requires factory servicing or repairs, write or call the iOptron Customer Service Department first to receive an RMA# before returning the telescope to the factory. Please provide details as to the nature of the problem as well as your name, address, and daytime telephone number. We have found that most problems can be resolved by telephone. So please call first to avoid returning the telescope for repair. Call toll free in the U.S. 866.399.4587 or 1.781.569.0200. It is also strongly suggested that to send technical questions to [support@ioptron.com](mailto:support@ioptron.com) .

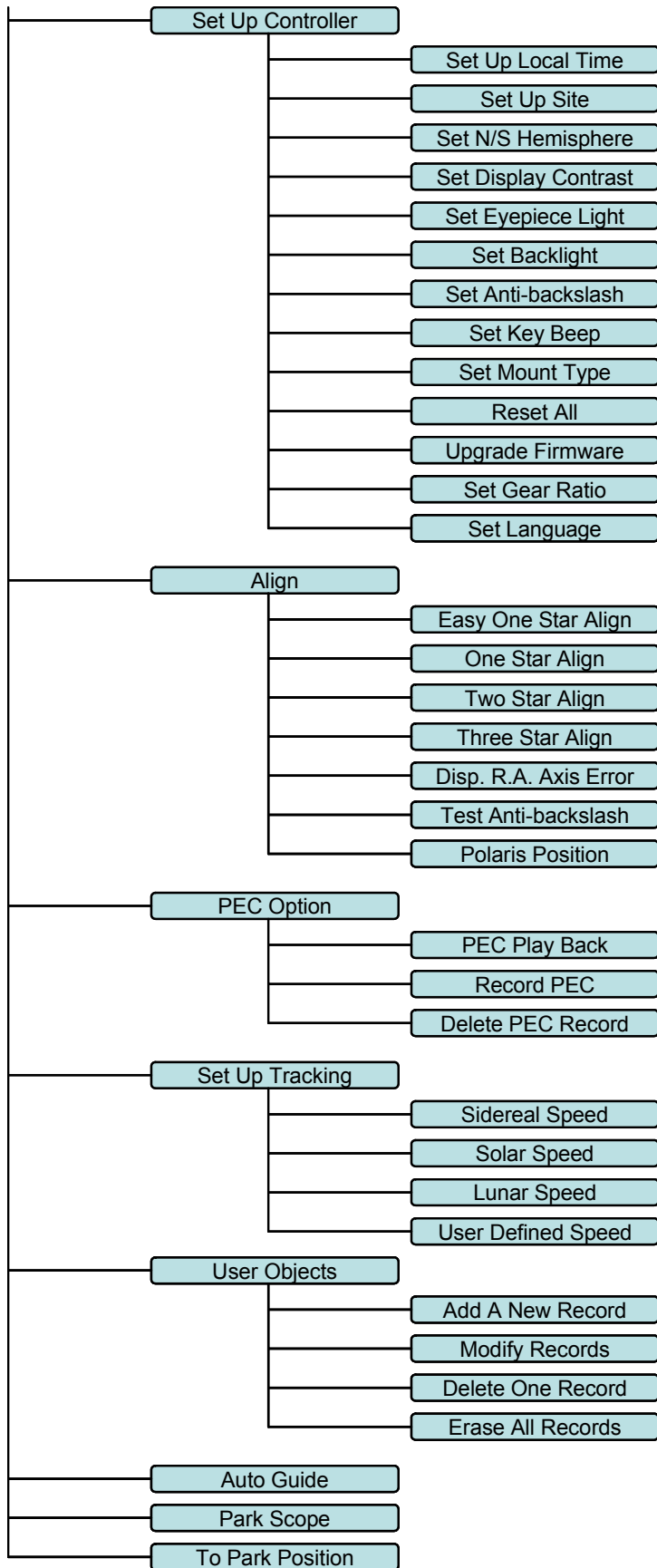
## Appendix A. Technical Specifications

|                     |  |
|---------------------|--|
| Mount               | AltAzimuth Mount   |
| Body Materials      | Die-cast Aluminum  |
| Motor               | Dual-Axis DC Servomotor, DC12V   |
| Gear                | Aluminum worm wheel/brass worm gear                                    |
| Bearing             | 4 high precision bearings  |
| Speed               | Dual-Axis, 9-Gear, Electronic<br>(1×,2×,8×,16×,64×,128×,256×,512×,MAX) |
| GPS                 | 32-channel GPS   |
| GOTO System         | GOTONOVA™ 130,000 objects database                                     |
| GOTO accuracy       | 1 Arc Min. (Typical)   |
| Resolution          | 0.1 Arc Sec.   |
| Tracking            | Automatic  |
| Payload             | 33 lb  |
| Second Payload      | 10 lb  |
| Tripod              | 2" Stainless Steel   |
| Battery             | AA x 8 (Not Included)  |
| Power Requirement   | DC 12V±2V, >1.2A   |
| USB Port            | Yes  |
| Protocol            | ASCOT  |
| Firmware Upgrade    | Yes  |
| PC Computer Control | Yes  |
| Weight with tripod  | 48 lbs. (shipping weight)  |

# Appendix B. GOTONOVA™ 8401 HC MENU STRUCTURE







## Appendix C. GTONOVA™ Star List

### GTONOVA Deep Sky Object List

for 8401, 8402 and 8403

| ID No. | OBJECT                    | NGC #  | Messier # | IC#  | A(Abell) | U(UGC) |
|--------|---------------------------|--------|-----------|------|----------|--------|
| 1      | Andromeda Galaxy          | 224    | 31        |      |          |        |
| 2      | Barnards Galaxy           | 6822   |           |      |          |        |
| 3      | Beehive Cluster           | 2632   | 44        |      |          |        |
| 4      | Blackeye Galaxy           | 4926   | 64        |      |          |        |
| 5      | Blinking Planetary Nebula | 6826   |           |      |          |        |
| 6      | Blue Flash Nebula         | 6905   |           |      |          |        |
| 7      | Blue Planetary            | 3918   |           |      |          |        |
| 8      | Blue Snowball Nebula      | 7662   |           |      |          |        |
| 9      | Box Nebula                | 6309   |           |      |          |        |
| 10     | Bubble Nebula             | 7635   |           |      |          |        |
| 11     | Bipolar Nebula            | 6302   |           |      |          |        |
| 12     | Butterfly Cluster         | 6405   | 6         |      |          |        |
| 13     | California Nebula         | 1499   |           |      |          |        |
| 14     | Cat's Eye Nebula          | 6543   |           |      |          |        |
| 15     | Cocoon Nebula             |        |           | 5146 |          |        |
| 16     | Cone Nebula               | 2264   |           |      |          |        |
| 17     | Cork Nebula               | 650-51 | 76        |      |          |        |
| 18     | Crab Nebula               | 1952   | 1         |      |          |        |
| 19     | Crescent Nebula           | 6888   |           |      |          |        |
| 20     | Draco Dwarf               |        |           |      |          | 10822  |
| 21     | Duck Nebula               | 2359   |           |      |          |        |
| 22     | Dumbbell Nebula           | 6853   | 27        |      |          |        |
| 23     | Eagle Nebula              |        | 16        |      |          |        |
| 24     | Eight-Burst Nebula        | 3132   |           |      |          |        |
| 25     | Eskimo Nebula             | 2392   |           |      |          |        |
| 26     | Flaming Star Nebula       |        |           | 405  |          |        |
| 27     | Ghost of Jupiter          | 3242   |           |      |          |        |
| 28     | Great Cluster             | 6205   | 13        |      |          |        |
| 29     | Helix Nebula              | 7293   |           |      |          |        |
| 30     | Hercules Galaxy Cluster   |        |           |      | 2151     |        |
| 31     | Hind's Variable Nebula    | 1555   |           |      |          |        |
| 32     | Hubble's Variable Nebula  | 2261   |           |      |          |        |
| 33     | Integral Sign Galaxy      |        |           |      |          | 3697   |
| 34     | Jewel Box Cluster         | 4755   |           |      |          |        |

|    |                        |      |     |      |  |      |
|----|------------------------|------|-----|------|--|------|
| 35 | Keyhole Nebula         | 3372 |     |      |  |      |
| 36 | Lagoon Nebula          | 6523 | 8   |      |  |      |
| 37 | Little Gem             | 6445 |     |      |  |      |
| 38 | Little Gem Nebula      | 6818 |     |      |  |      |
| 39 | Little Ghost Nebula    | 6369 |     |      |  |      |
| 40 | North American Nebula  | 7000 |     |      |  |      |
| 41 | Omega Nebula           | 6618 | 17  |      |  |      |
| 42 | Orion Nebula           | 1976 | 42  |      |  |      |
| 43 | Owl Nebula             | 3587 | 97  |      |  |      |
| 44 | Pelican Nebula         |      |     | 5070 |  |      |
| 45 | Phantom Streak Nebula  | 6741 |     |      |  |      |
| 46 | Pinwheel Galaxy        | 598  | 33  |      |  |      |
| 47 | Pleiades               |      | 45  |      |  |      |
| 48 | Ring Nebula            | 6720 | 57  |      |  |      |
| 49 | Ring Tail Galaxy       | 4038 |     |      |  |      |
| 50 | Rosette Nebula         | 2237 |     |      |  |      |
| 51 | Saturn Nebula          | 7009 |     |      |  |      |
| 52 | Sextans B Dwarf        |      |     |      |  | 5373 |
| 53 | Small Magellanic Cloud | 292  |     |      |  |      |
| 54 | Sombrero Galaxy        | 4594 | 104 |      |  |      |
| 55 | Spindle Galaxy         | 3115 |     |      |  |      |
| 56 | Tank Track Nebula      | 2024 |     |      |  |      |
| 57 | Trifid Nebula          | 6514 | 20  |      |  |      |
| 58 | Ursa Minor Dwarf       |      |     |      |  | 9749 |
| 59 | Whirlpool Galaxy       | 5194 | 51  |      |  |      |
| 60 | Wild Duck Cluster      | 6705 | 11  |      |  |      |

## Modern Constellations

| No. | Constellation    | Abbreviation |
|-----|------------------|--------------|
| 1   | Andromeda        | And          |
| 2   | Antlia           | Ant          |
| 3   | Apus             | Aps          |
| 4   | Aquarius         | Aqr          |
| 5   | Aquila           | Aql          |
| 6   | Ara              | Ara          |
| 7   | Aries            | Ari          |
| 8   | Auriga           | Aur          |
| 9   | Boötes           | Boo          |
| 10  | Caelum           | Cae          |
| 11  | Camelopardalis   | Cam          |
| 12  | Cancer           | Cnc          |
| 13  | Canes Venatici   | CVn          |
| 14  | Canis Major      | CMa          |
| 15  | Canis Minor      | CMi          |
| 16  | Capricornus      | Cap          |
| 17  | Carina           | Car          |
| 18  | Cassiopeia       | Cas          |
| 19  | Centaurus        | Cen          |
| 20  | Cepheus          | Cep          |
| 21  | Cetus            | Cet          |
| 22  | Chamaeleon       | Cha          |
| 23  | Circinus         | Cir          |
| 24  | Columba          | Col          |
| 25  | Coma Berenices   | Com          |
| 26  | Corona Australis | CrA          |
| 27  | Corona Borealis  | CrB          |
| 28  | Corvus           | Crv          |
| 29  | Crater           | Crt          |
| 30  | Crux             | Cru          |
| 31  | Cygnus           | Cyg          |
| 32  | Delphinus        | Del          |
| 33  | Dorado           | Dor          |
| 34  | Draco            | Dra          |
| 35  | Equuleus         | Equ          |
| 36  | Eridanus         | Eri          |
| 37  | Fornax           | For          |
| 38  | Gemini           | Gem          |
| 39  | Grus             | Gru          |
| 40  | Hercules         | Her          |
| 41  | Horologium       | Hor          |
| 42  | Hydra            | Hya          |
| 43  | Hydrus           | Hyi          |
| 44  | Indus            | Ind          |

| No. | Constellation       | Abbreviation |
|-----|---------------------|--------------|
| 45  | Lacerta             | Lac          |
| 46  | Leo                 | Leo          |
| 47  | Leo Minor           | LMi          |
| 48  | Lepus               | Lep          |
| 49  | Libra               | Lib          |
| 50  | Lupus               | Lup          |
| 51  | Lynx                | Lyn          |
| 52  | Lyra                | Lyr          |
| 53  | Mensa               | Men          |
| 54  | Microscopium        | Mic          |
| 55  | Monoceros           | Mon          |
| 56  | Musca               | Mus          |
| 57  | Norma               | Nor          |
| 58  | Octans              | Oct          |
| 59  | Ophiuchus           | Oph          |
| 60  | Orion               | Ori          |
| 61  | Pavo                | Pav          |
| 62  | Pegasus             | Peg          |
| 63  | Perseus             | Per          |
| 64  | Phoenix             | Phe          |
| 65  | Pictor              | Pic          |
| 66  | Pisces              | Psc          |
| 67  | Piscis Austrinus    | PsA          |
| 68  | Puppis              | Pup          |
| 69  | Pyxis               | Pyx          |
| 70  | Reticulum           | Ret          |
| 71  | Sagitta             | Sge          |
| 72  | Sagittarius         | Sgr          |
| 73  | Scorpius            | Sco          |
| 74  | Sculptor            | Scl          |
| 75  | Scutum              | Sct          |
| 76  | Serpens             | Ser          |
| 77  | Sextans             | Sex          |
| 78  | Taurus              | Tau          |
| 79  | Telescopium         | Tel          |
| 80  | Triangulum          | Tri          |
| 81  | Triangulum Australe | TrA          |
| 82  | Tucana              | Tuc          |
| 83  | Ursa Major          | UMa          |
| 84  | Ursa Minor          | UMi          |
| 85  | Vela                | Vel          |
| 86  | Virgo               | Vir          |
| 87  | Volans              | Vol          |
| 88  | Vulpecula           | Vul          |

## GOTONOVA Named Star List for 8401

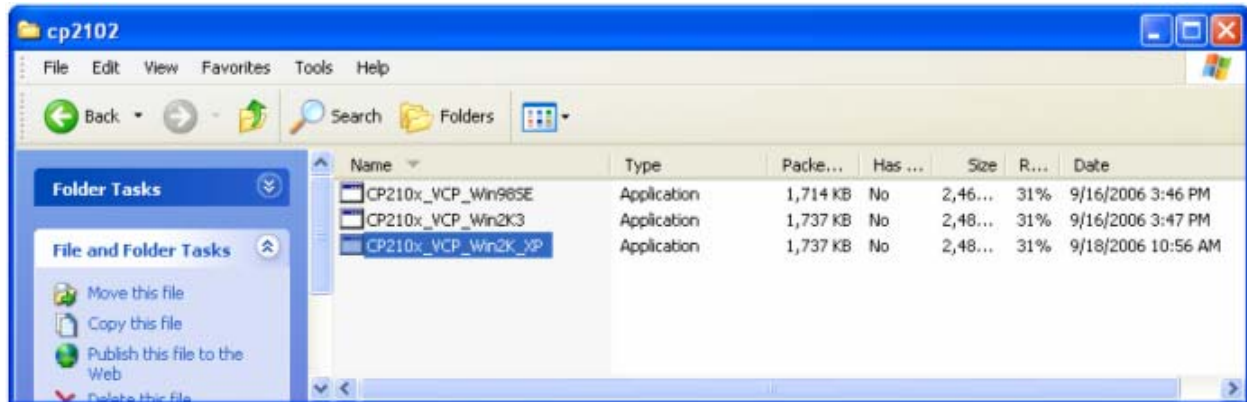
|                     |                       |                    |                     |
|---------------------|-----------------------|--------------------|---------------------|
| 001 Acamar          | 049 Ascella           | 097 Kaus Australis | 145 Rassalas        |
| 002 Achernar        | 050 Asellus Australis | 098 Kaus Borealis  | 146 Rasagethi       |
| 003 Acrux           | 051 Asellus Borealis  | 099 Kaus Media     | 147 Rasalhague      |
| 004 Acubens         | 052 Aspidiske         | 100 Keid           | 148 Rastaba         |
| 005 Adhafera        | 053 Atik              | 101 Kitalpha       | 149 Regulus         |
| 006 Adhara          | 054 Atlas             | 102 Kochab         | 150 Rigel           |
| 007 Al Na'ir        | 055 Atria             | 103 Kornephoros    | 151 Rigel Kentaurus |
| 008 Albali          | 056 Avoir             | 104 Kurhah         | 152 Ruchbah         |
| 009 Alberio         | 057 Azha              | 105 Lesath         | 153 Rukbat          |
| 010 Alchibar        | 058 Baten Kaitos      | 106 Maia           | 154 Sabik           |
| 011 Alcor           | 059 Beid              | 107 Marfik         | 155 Sadachbia       |
| 012 Alcyone         | 060 Bellatrix         | 108 Markab         | 156 Sadalbari       |
| 013 Aldebaran       | 061 Betelgeuse        | 109 Matar          | 157 Sadalmelik      |
| 014 Alderamin       | 062 Biham             | 110 Mebsuta        | 158 Sadalsuud       |
| 015 Alfirk          | 063 Canopus           | 111 Megrez         | 159 Sadr            |
| 016 Algedi          | 064 Capella           | 112 Meissa         | 160 Saiph           |
| 017 Algenib         | 065 Caph              | 113 Mekbuda        | 161 Scheat          |
| 018 Algiebra        | 066 Castor            | 114 Menkalinan     | 162 Schedar         |
| 019 Algol           | 067 Celabrai          | 115 Menkar         | 163 Seginus         |
| 020 Algorab         | 068 Celaeno           | 116 Menkent        | 164 Shaula          |
| 021 Alhena          | 069 Chara             | 117 Menkib         | 165 Sheiak          |
| 022 Alioth          | 070 Chertan           | 118 Merak          | 166 Sheratan        |
| 023 Alkaid          | 071 Cor Caroli        | 119 Merope         | 167 Sirius          |
| 024 Alkalurops      | 072 Cursa             | 120 Mesartim       | 168 Skat            |
| 025 Alkes           | 073 Dabih             | 121 Miaplacidus    | 169 Spica           |
| 026 Almach          | 074 Deneb             | 122 Mintaka        | 170 Sterope         |
| 027 Alnasl          | 075 Deneb Algedi      | 123 Mira           | 171 Sulafat         |
| 028 Alnilam         | 076 Deneb Kaitos      | 124 Mirach         | 172 Syrma           |
| 029 Alnitak         | 077 Denebola          | 125 Mirfak         | 173 Talitha         |
| 030 Alphard         | 078 Dubhe             | 126 Mirzam         | 174 Tania Australis |
| 031 Alphecca        | 079 Edasich           | 127 Mizar          | 175 Tania Borealis  |
| 032 Alpheratz       | 080 Electra           | 128 Muphrid        | 176 Tarazed         |
| 033 Alrakis         | 081 Elnath            | 129 Muscida        | 177 Taygeta         |
| 034 Alrescha        | 082 Eltanin           | 130 Nashira        | 178 Thuban          |
| 035 Alshain         | 083 Enif              | 131 Nekkar         | 179 Unukalhai       |
| 036 Altair          | 084 Errai             | 132 Nihal          | 180 Vega            |
| 037 Altais          | 085 Fomalhaut         | 133 Nunki          | 181 Vindemiatrix    |
| 038 Alterf          | 086 Furd              | 134 Nusakan        | 182 Wasat           |
| 039 Aludra          | 087 Gacrux            | 135 Peacock        | 183 Wazn            |
| 040 Alula Australis | 088 Giasar            | 136 Phact          | 184 Yed Posterior   |
| 041 Alula Borealis  | 089 Gienah            | 137 Phecda         | 185 Yed Prior       |
| 042 Alya            | 090 Gomeisa           | 138 Pherkad        | 186 Zaniah          |
| 043 Ancha           | 091 Graffias          | 139 Pleione        | 187 Zaurak          |
| 044 Ankaa           | 092 Groombridge 1830  | 140 Polaris        | 188 Zavijava        |
| 045 Antares         | 093 Grumium           | 141 Pollux         | 189 Zosma           |
| 046 Arcturus        | 094 Hamal             | 142 Porrima        | 190 Zubenelgenubi   |
| 047 Arkab           | 095 Homan             | 143 Procyon        | 191 Zubeneschamali  |
| 048 Arneb           | 096 Izar              | 144 Propus         |                     |

**GOTONOVA Double Star List**  
for 8401

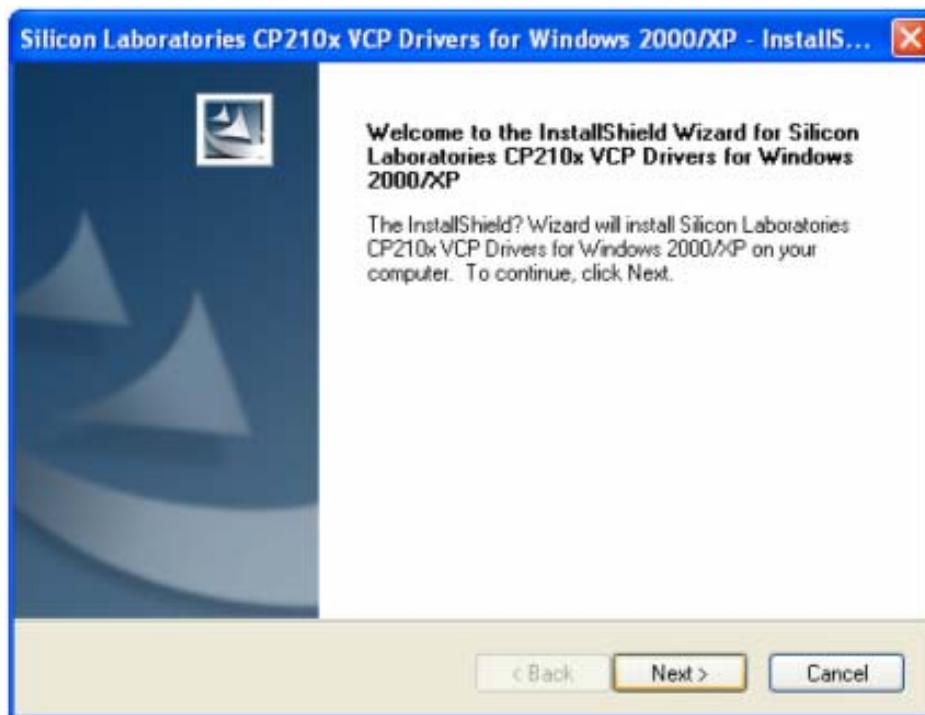
| No. | Object  | Const | SAO    | Name          |
|-----|---------|-------|--------|---------------|
| 1   | Eta     | Cas   | 21732  | Achird        |
| 2   | Alpha   | Psc   | 110291 | Alrisha       |
| 3   | Theta   | Per   | 38288  |               |
| 4   | Alpha   | For   | 168373 | Fornacis      |
| 5   | Alpha   | Aur   | 40186  | Capella       |
| 6   | Sigma   | Ori   | 132406 |               |
| 7   | Mu      | Ori   | 113389 |               |
| 8   | Alpha   | CMa   | 151881 | Sirius        |
| 9   | Delta   | Gem   | 79294  | Wasat         |
| 10  | Alpha   | Gem   | 60198  | Castor        |
| 11  | Alpha   | CMi   | 115756 |               |
| 12  | Epsilon | Hya   | 117112 |               |
| 13  | HR 3579 |       | 42642  |               |
| 14  | Kapa    | UMa   | 42661  |               |
| 15  | Psi     | Vel   | 221234 |               |
| 16  | Gamma   | Leo   | 81298  | Algieba       |
| 17  | HR 4167 |       | 222199 |               |
| 18  | Mu      | Vel   | 222321 |               |
| 19  | Alpha   | UMa   | 15384  | Dubhe         |
| 20  | Zeta    | UMa   | 28737  | Mizar         |
| 21  | Iota    | Leo   | 99587  |               |
| 22  | Gamma   | Cen   | 223603 |               |
| 23  | Gamma   | Vir   | 138917 | Porrina       |
| 24  | Beta    | Mus   | 252019 |               |
| 25  | HR 5089 |       | 204545 |               |
| 26  | Alpha   | Cen   | 252838 |               |
| 27  | Zeta    | Boo   | 101145 |               |
| 28  | Gamma   | Lup   | 225938 |               |
| 29  | Gamma   | CrA   | 83958  |               |
| 30  | Xi      | Sco   | 159665 |               |
| 31  | Alpha   | Sco   | 184415 | Antares       |
| 32  | Lambda  | Oph   | 121658 | Marfic        |
| 33  | Zeta    | Her   | 65485  |               |
| 34  | Eta     | Oph   | 160332 | Sabik         |
| 35  | 70      | Oph   | 123107 |               |
| 36  | Zeta    | Sgr   | 187600 | Ascella       |
| 37  | Delta   | Cyg   | 48796  |               |
| 38  | Beta    | Del   | 106316 | Rotanev       |
| 39  | Tau     | Cyg   | 71121  |               |
| 40  | Epsilon | Lyr   | 67310  | double double |

## Appendix D. Set Up USB-PC Connection

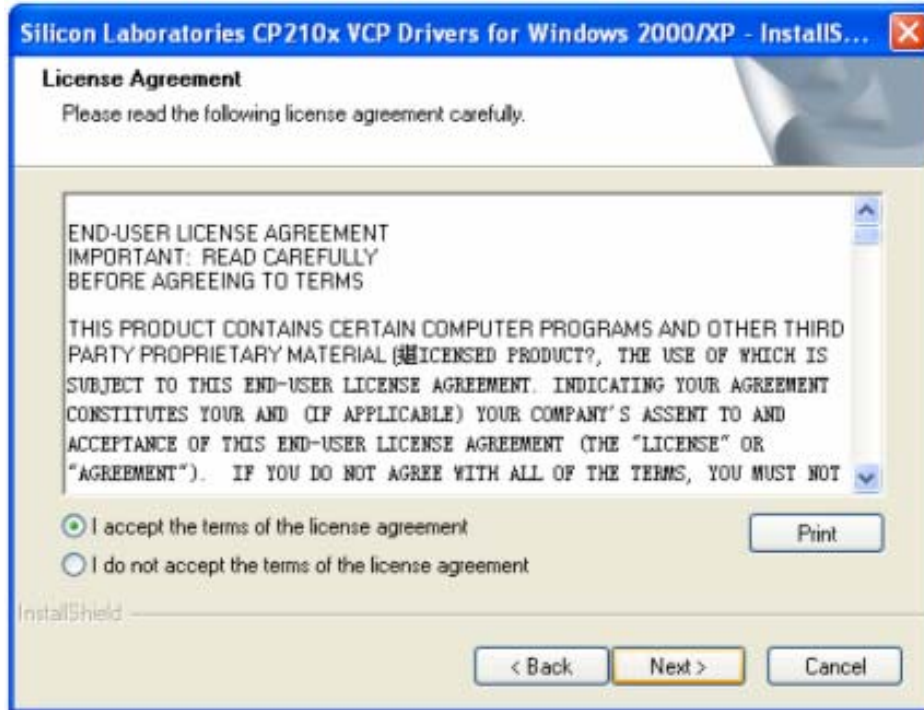
1. Download USB2COM driver (cp2102.zip file for 8401) from iOptron Website
2. Install cp2101(usb2com) driver



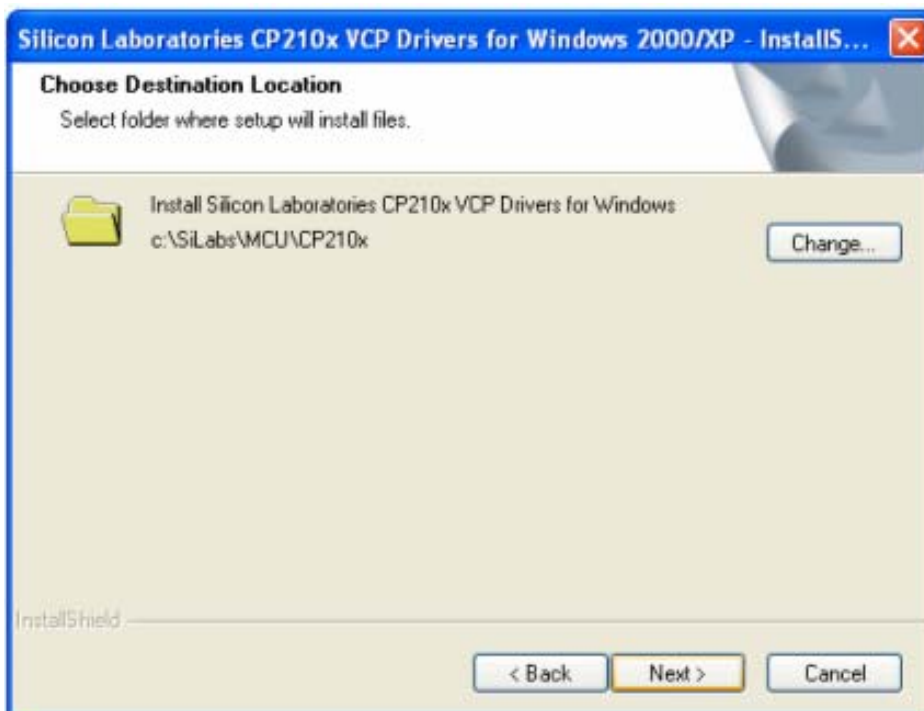
Choose the appropriate driver for your OS. In this case is a Windows XP operation system. Double click on it, and you will see:



Click "Next".

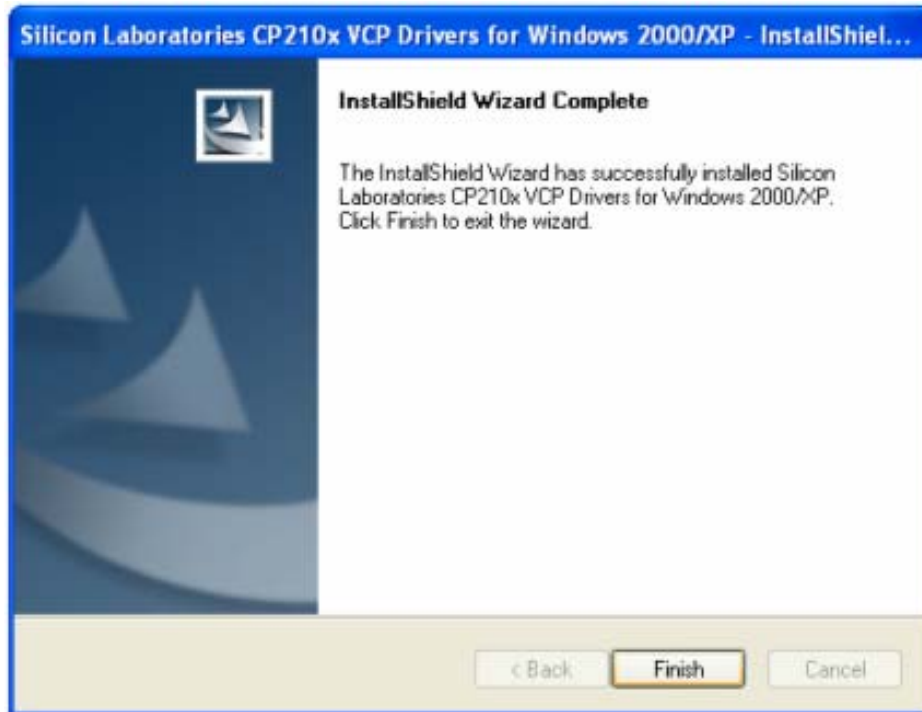


Select "I accept the terms of license agreement", and click "Next"



Using the default installation path, c:\SiLabs\MCU\CP210x, or specify your own path by click "Change". Click "Next". Then click "Install".



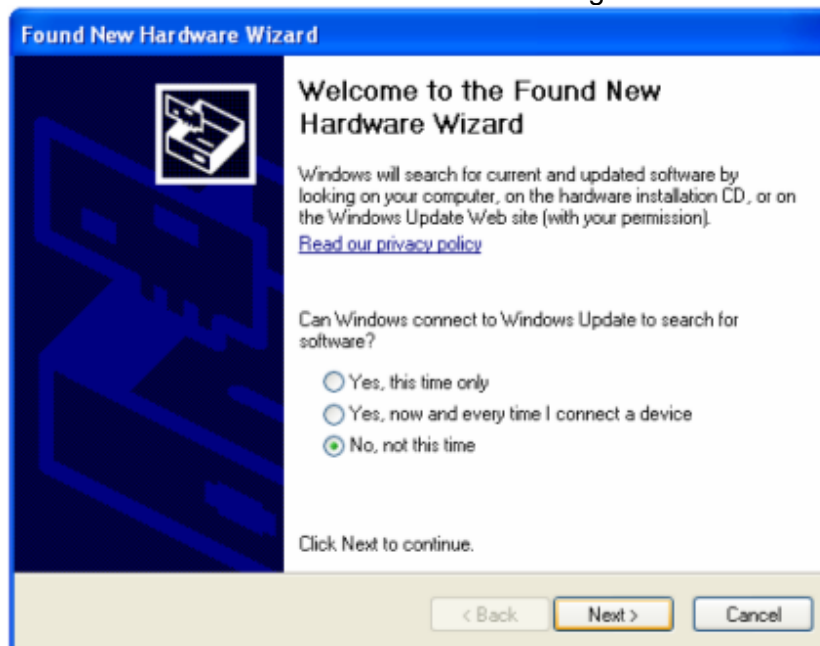


When finished installation, click “Finish”

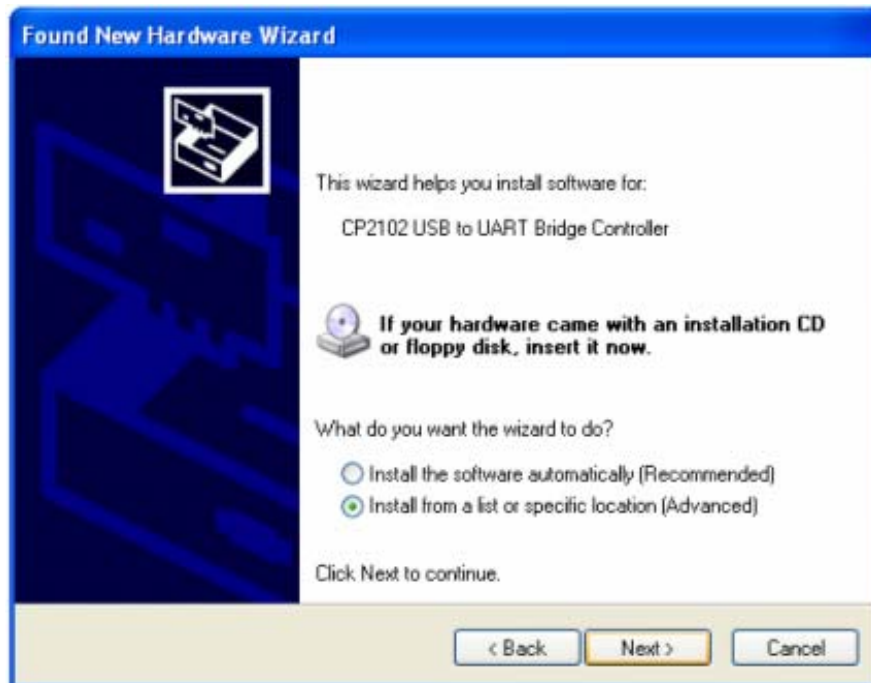
3. Plug the USB cable to the USB port on your PC, plug the other end of the USB cable to hand controller. Turn on the power on the mount.

#### 4. Install the Hardware

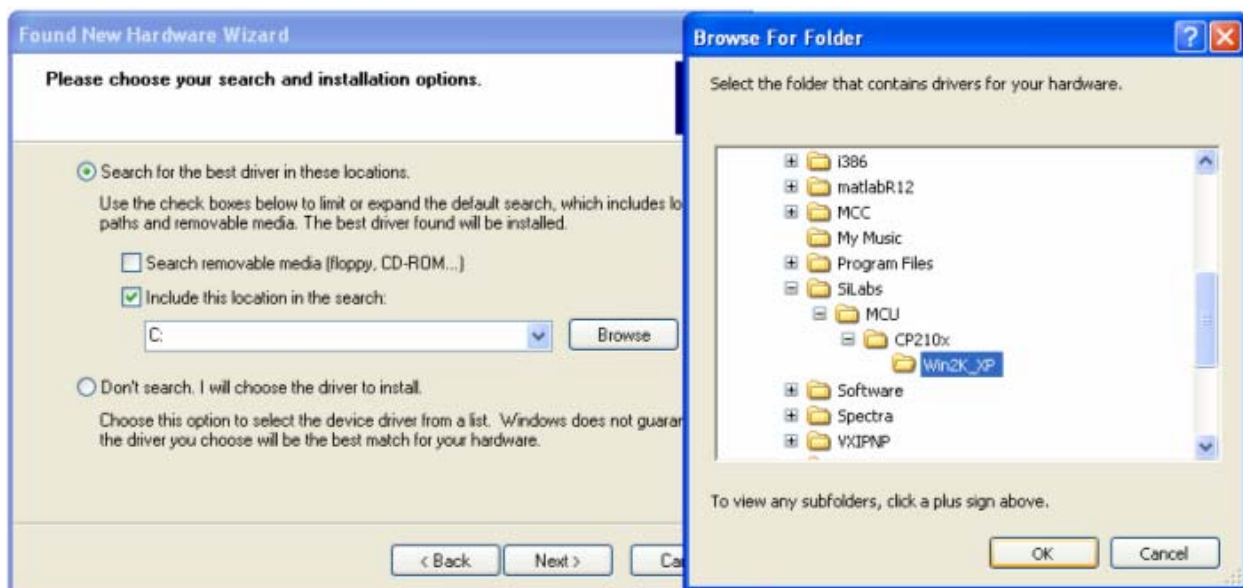
The computer will find a new hardware and show the following screen



Select “No, not this time” and click “Next”.

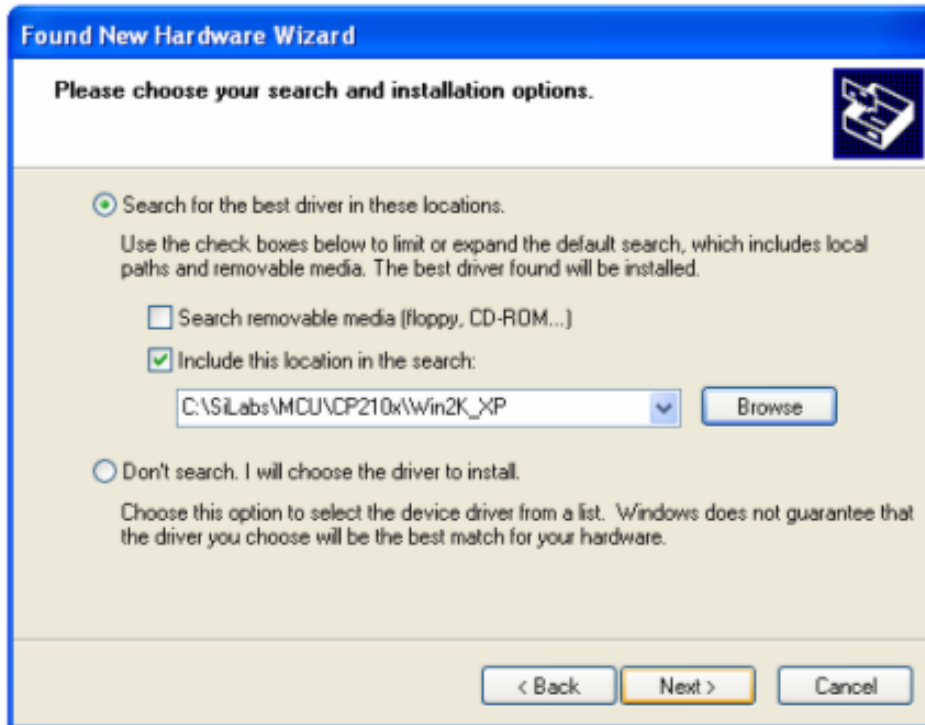


Select "Install from a list or specific location" and click "Next".



Select "Search for the best driver in these locations," and check "Include this location in the search."

Click on "Browse" and select the cp210x driver from directory c:\SiLabs\MCU\CP210x\Win2K\_XP, click OK.



Click “Next”. The computer will start to install the driver for the USB2COM. When the installation is done, click “Finish”.

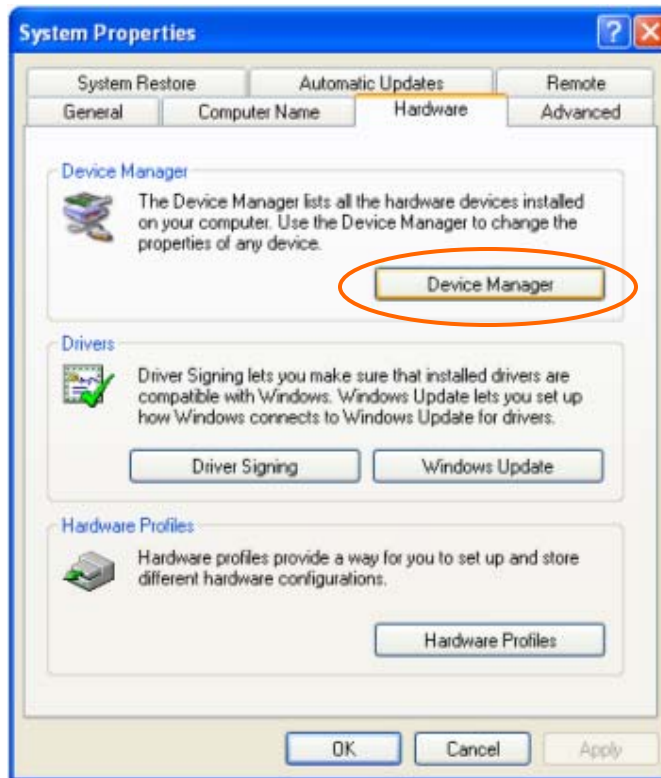


If the computer shows “find a new hardware” screen again, just repeat the steps in this section again.

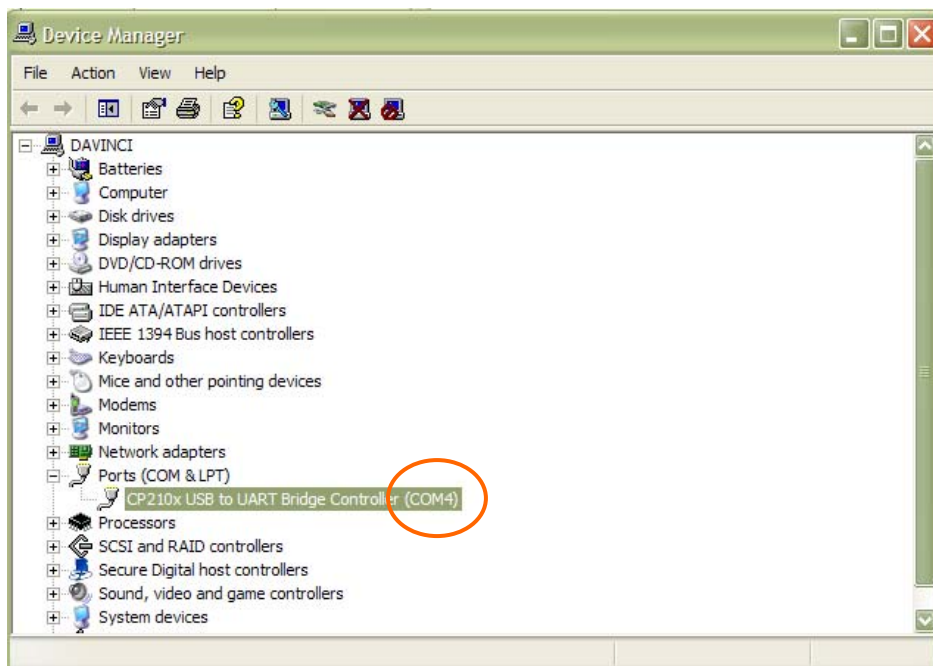
Now your computer should be ready for Firmware Upgrading; computer communication with the mount via ASCOM platform; and planetarium software applications. However, you need to find assigned COM port number for the USB connection. To do so, right click “My Computer”, and click “Properties”



Click “Hardware”, click “Device Manager”

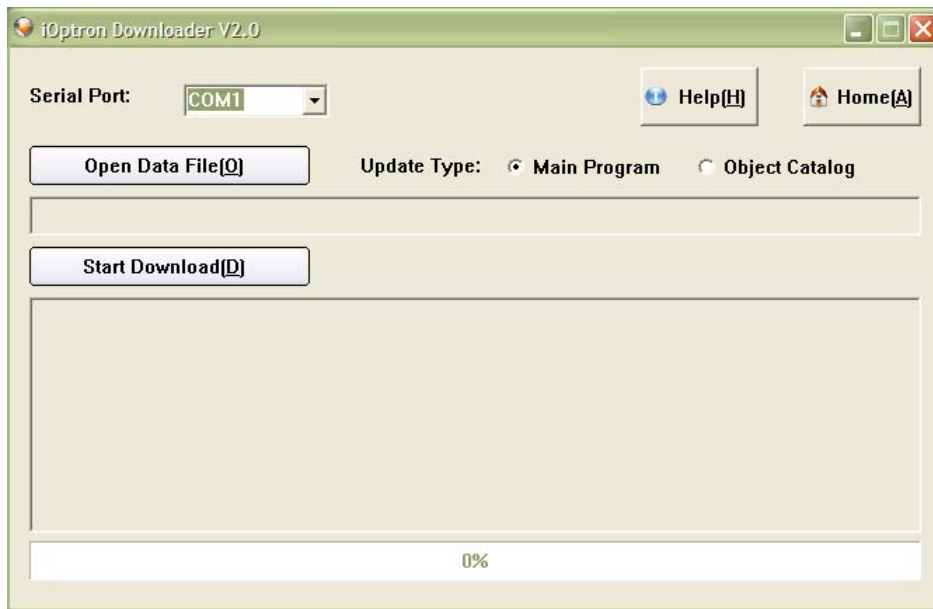


Double click on “Ports (COM & LPT)”. Find the COM number and write it down (in the following figure, it is COM4)

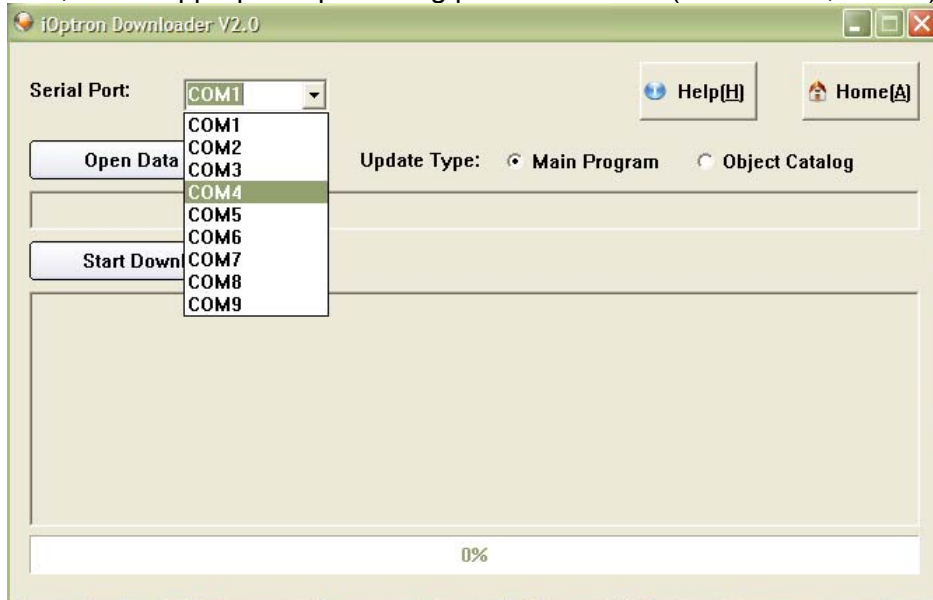


## Appendix E. Firmware Upgrade

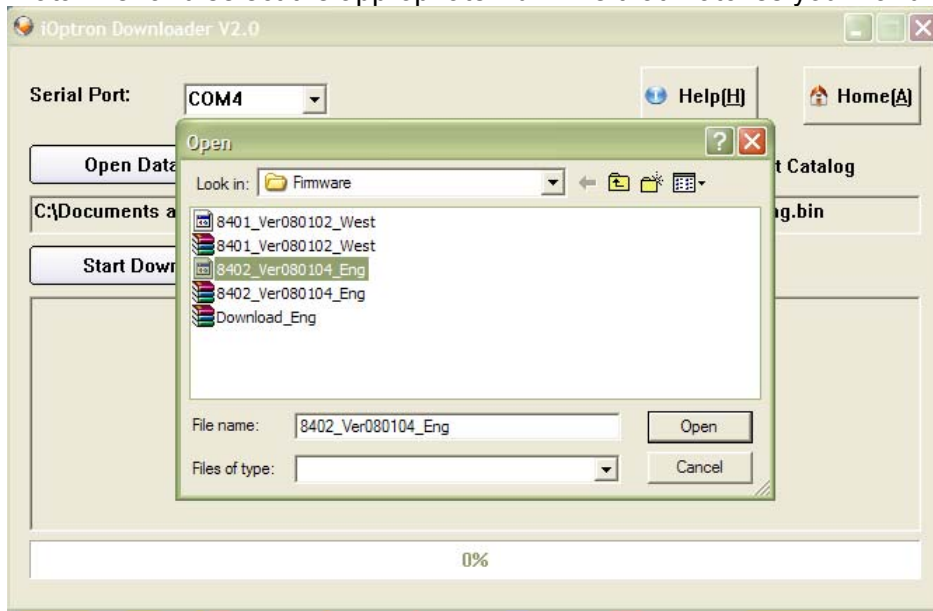
1. Download and install Firmware Downloader from iOptron Website
2. Double click and open “iOptron Downloader”



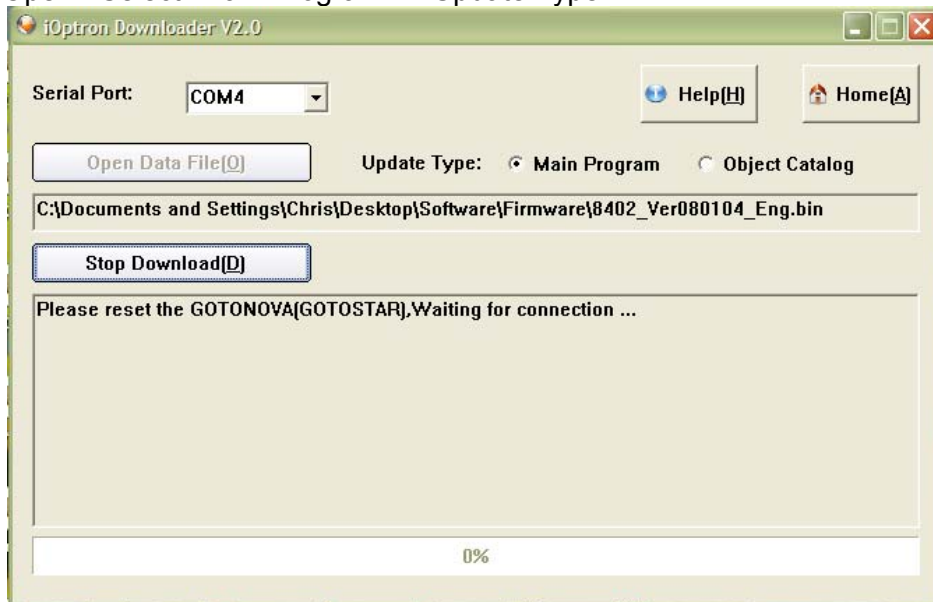
On the interface, select appropriate port using pull-down menu (in this case, COM4):



Click “Open Data File” and select the appropriate “.bin” file that matches your hand controller.



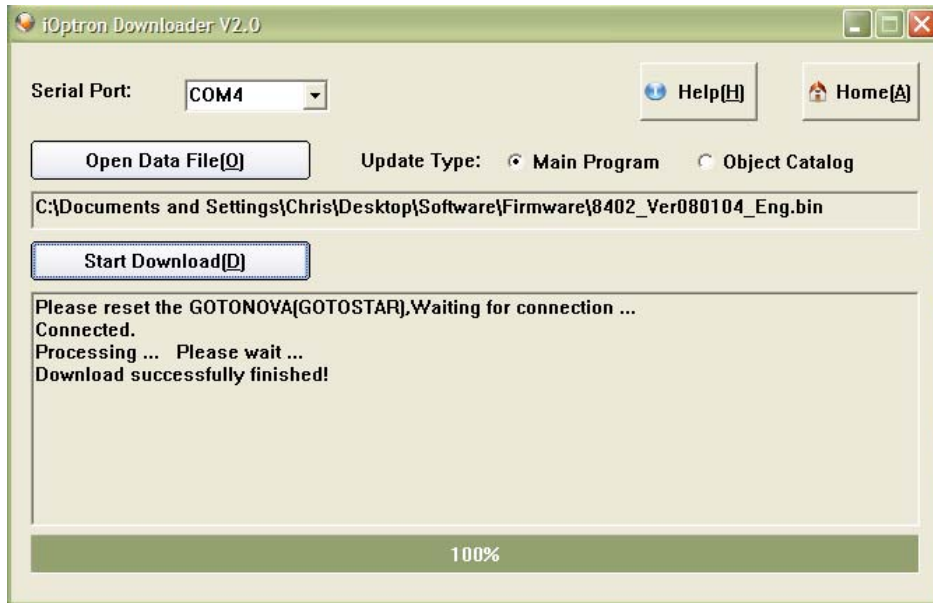
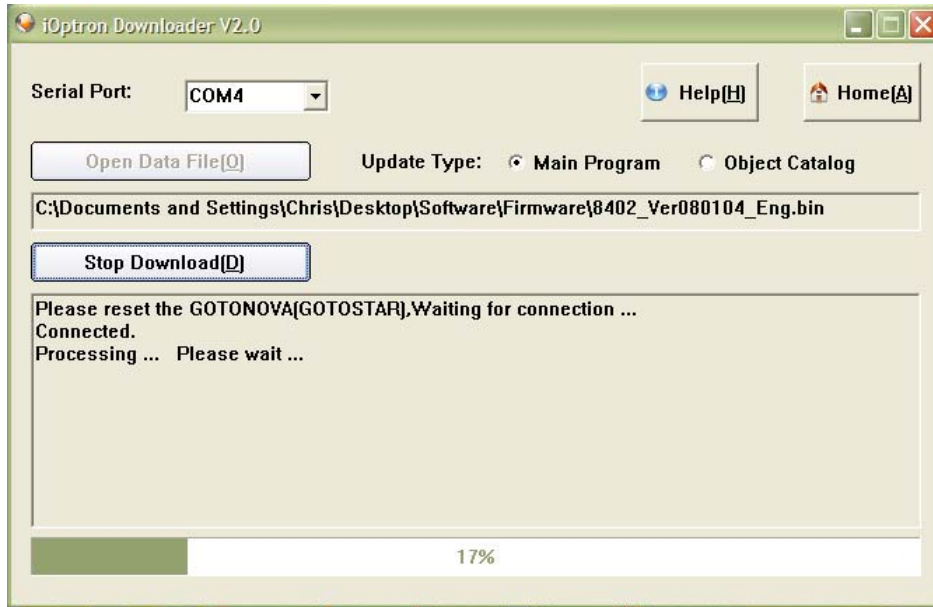
Then click “Open”. Select “Main Program” in Update Type.



Click “Start Download”

It shows “Please reset GOTONOVA[GOTOSTAR], waiting for connection...”

On the hand controller, press “MENU”, and using ▼▲ scroll to select “Set u controller”, press “ENTER”, then select “Upgrade firmware”, press “ENTER” and the upgrade will start.



The upgrade is complete. Turn your mount power off then on again.

**Typical Errors:**

1. Invalid Port Number: in Device Manager: make sure you have the correct COM port number for CP210x.
2. Screen is now blank: Wrong ".bin" file: make sure you have the correct ".bin" file for firmware upgrade.
3. Wrong downloader: you should use iOptron Downloader instead of the Flash Downloader.
4. Use cp210x driver provided by iOptron. The newest version from SiLab may not work properly for iOptron's hand controller.



## Appendix F. Use a PC to Control an iOptron Mount

In general you need the followings to use a PC to control the mount,

1. Download USB2COM driver (cp2102, zip file for 8401 and 8402A)  
[http://www.ioptron.com/manuals/USB\\_2COM\\_Driver.zip](http://www.ioptron.com/manuals/USB_2COM_Driver.zip);
2. Install USB2COM and establish the connection between the mount and the PC (see instruction);
3. ASCOM platform (download from <http://ascom-standards.org/>);
4. iOptron ASCOM drive (download it from iOptron website  
<http://www.ioptron.com/Files/File/iOptronAscomSetupV1.02.rar>); and
5. Planetarium software.

Some company integrated iOptron's products into their planetarium software, such as Voyage and The Sky X Pro. Therefore, an ASCOM plug-in will not be needed. Most planetarium software can be used to control iOptron's product via ASCOM.

Some other ASCOM drivers such as LX200 Generic ASCOM driver and AstroPhysics GTO mount driver may also be compatible with the SmartStar<sup>®</sup> mount.

## Appendix G. RS-232 Command Set

### Abbreviations used:

DD or DDD degrees or day of the month depending on the context  
HH hours  
MM minutes or month depending on the context  
MM.M minutes and tenths of minutes  
s + or – sign, assumed to be + if omitted  
SS seconds  
SS.S seconds and tenths of seconds  
YY last two digits of the year

### *General Telescope Information:*

**Command: :SG sHH#**

**Response: "1"**

Set the offset from Greenwich mean time. The offset can be entered in signed format (-12 to +12) hours.

**Command: :Sg sDDD\*MM:SS#**

**Response: "1"**

Set the current longitude. The east is positive while the west is negative.

**Command: :St sDD\*MM:SS**

**Response: "1"**

Set the current latitude.

**Command: :SL HH:MM:SS#**

**Response: "1"**

Set the current local time.

**Command: :SC MM/DD/YY#**

**Response: 32 spaces followed by "#", followed by 32 spaces, followed by "#"**

Set the current date.

**Command: :GG#**

**Response:**

East Longitude E HH:00#

West Longitude W HH:00#

Get the offset from Greenwich mean time.

**Command: :Gg#**

**Response: sDDD\*MM:SS#**

Get the current longitude.

**Command: :Gt#**

**Response: sDD\*MM:SS#**

Get the current latitude.

**Command: :GL#**

**Response: HH:MM:SS.S#**

Get the current local time in 24 hour format. Overflows from 23:59:59 to 00:00:00.

**Command: :GS#**

**Response: HH:MM:SS.S#**

Get the current local sidereal time in 24 hr. format.

**Command: :GR#**

**Response: HH:MM:SS.S#**

Get the current Right Ascension of mount.

**Command: :GD#**

**Response: sDD\*MM:SS#**

Get the current Declination.

**Command: :GA#**

**Response: sDD\*MM:SS#**

Get the current Altitude.

**Command: :GZ#**

**Response: sDD\*MM:SS#**

Get the current Azimuth.

**Command: :GC#**

**Response: MM:DD:YY#**

Get the current calendar day.

### ***Telescope Motion***

**Command: :MS#**

**Response: "0" if command accepted,**

**"1Object is below horizon #" the desired object is below 0 degrees altitude. (8 trailing spaces before "#", 32 total characters plus "#")**

Target command: Slew to the most recently defined RA and DEC coordinates in RA-DEC mode,

**Command: :Mn# :Ms# :Me# :Mw#**

**Response: (none)**

Command motion in the direction specified (n=north, s=south, e=east, w=west) at the currently selected guide or centering rate. Motion will continue until a quit command is issued.

**Command: :Qn# :Qs# :Qe# :Qw#**

**Response: (none)**

Stop motion in the specified axis. Note that :Qn# is identical to :Qs#, and :Qe# is identical to :Qw#. Motion is terminated only if it was not started by a slew (:MS#) command.

**Command: :Q#**

**Response: (none)**

Motion in both axes is stopped, regardless of how the motion was invoked.

**Command: :RG#**

**Response: (none)**

Selects guide. If tracking is stopped, turns tracking on.

**Command: :RC#**

**Response: (none)**

This command sets to quit guide mode.

**Command: :RCn#**

**Response: (none)**

:RC0 # Set moving speed by N-S-E-W Keys to 16x

:RC1 # Set moving speed by N-S-E-W Keys to 64x

:RC2 # Set moving speed by N-S-E-W Keys to 256x

:RC3 # Set moving speed by N-S-E-W Keys to 512x

**Command: :pS#**

**Response: "East#" or "West#"**

This command returns the side of the pier on which the telescope is currently positioned.

### ***Position***

**Command: :CM#**

**Response: "Coordinates matched. #"**

**(there are 5 spaces between "Coordinates" and "matched", and 8 trailing spaces before the "#", the total response length is 32 character plus the "#").**

Calibrate mount. Current Right Ascension and Declination become the commanded Right Ascension and Declination. This command does the same thing as synchronize to target. This command should be used after a ":MS#" command has been finished. This means a GOTO must be done first.

**Command: :CMR#**

**Response: "Coordinates matched. #"**

**(there are 5 spaces between "Coordinates" and "matched", and 8 trailing spaces before the "#", the total response length is 32 character plus the "#").**

Calibrate mount. Current Right Ascension and Declination become the commanded Right Ascension and Declination. This command synchronizes HC coordinate to commanded coordinate. No GOTO needs to be done first.

**Command: :Sr HH:MM:SS.S#**

**Response: "1"**

Define the commanded Right Ascension, RA.

**Command: :Sd sDD\*MM:SS#**

**Response: "1"**

Define the commanded Declination.

**Miscellaneous**

**Command: :F+# :F-# :FF# :FS# :FQ#**

**Response: (none)**

Advances (F+) or retracts (F-) focus adjust motor on the eyepiece. F+ or F- commands commence adjustment and :FQ# stops it. If :FS# has been issued previously, then the focus adjustment will be slow. If the :FF# command has been issued, then the adjustment will be fast. If neither FF nor FS is specified, the power up default of FS is assumed.

**Command: :F1# :F2# :F3# :F4#**

**Response: (none)**

Set the focus speed to 1,2,3,4, from slow to fast.

**Command: :V#**

**Response: (current servo controller software RS232 command language version number)**

This command returns the current servo controller software RS232 command language version.

**Command: :Vs#**

**Response: (current servo controller software information)**

This command returns the current servo controller software information.

**Command: :STR0#,:STR1#,:STR2#**

**Response: '1'**

This command sets the track rate.

0 - sidereal

1- solar

2- lunar

**Command: :GTR#**

**Response: '0','1','2'**

This command gets the current tracking rate.

- 0 - sidereal
- 1 – solar
- 2 - lunar

**Command: :SGS0#,:SGS1#,:SGS2#,:SGS3#,**

**Response: (none)**

This command sets the guide rate.

- 0 – 1.0X of sidereal
- 1 – 0.8X of sidereal
- 2 – 0.6X of sidereal
- 3 – 0.4X of sidereal

**Command: :GGS#**

**Response: '0','1','2','3'**

This command gets the current guide rate.

- 0 – 1.0X of sidereal
- 1 – 0.8X of sidereal
- 2 – 0.6X of sidereal
- 3 – 0.4X of sidereal

**Command: :SE?#**

**Response: '0','1',**

This command gets the slewing status.

- '1' in slewing
- '0 ' not in slewing

**Command: :GAM#**

**Response: '0','1', '2'**

This command gets the current mount type.

- 0 – Altitude/Azimuth type
- 1 – fork mount
- 2 – Germany equator mount

**Command: :PK#"**

**Response: '1'**

This command parks the telescope .

**Command: : STPKP0#, :STPKP1#, :STPKP2#, :STPKP3#, :STPKP4#,**

**Response: '1'**

These command sets the mount park position.

- 0 – original to north pole
- 1 - Left and vertical
- 2 - Left and horizon
- 3 - Right and vertical
- 4 - Right and horizon

## IOPTRON TWO YEAR TELESCOPE, MOUNT, AND CONTROLLER WARRANTY

A. iOptron warrants your telescope, mount, or controller to be free from defects in materials and workmanship for two years. iOptron will repair or replace such product or part which, upon inspection by iOptron, is found to be defective in materials or workmanship. As a condition to the obligation of iOptron to repair or replace such product, the product must be returned to iOptron together with proof-of-purchase satisfactory to iOptron.

B. The Proper Return Authorization Number must be obtained from iOptron in advance of return. Call iOptron at 1.866.399.4587 to receive the number to be displayed on the outside of your shipping container. All returns must be accompanied by a written statement stating the name, address, and daytime telephone number of the owner, together with a brief description of any claimed defects. Parts or product for which replacement is made shall become the property of iOptron.

The customer shall be responsible for all costs of transportation and insurance, both to and from the factory of iOptron, and shall be required to prepay such costs.

iOptron shall use reasonable efforts to repair or replace any telescope, mount, or controller covered by this warranty within thirty days of receipt. In the event repair or replacement shall require more than thirty days, iOptron shall notify the customer accordingly. iOptron reserves the right to replace any product which has been discontinued from its product line with a new product of comparable value and function.

This warranty shall be void and of no force of effect in the event a covered product has been modified in design or function, or subjected to abuse, misuse, mishandling or unauthorized repair. Further, product malfunction or deterioration due to normal wear is not covered by this warranty.

IOPTRON DISCLAIMS ANY WARRANTIES, EXPRESS OR IMPLIED, WHETHER OF MERCHANTABILITY OF FITNESS FOR A PARTICULAR USE, EXCEPT AS EXPRESSLY SET FORTH HERE. THE SOLE OBLIGATION OF IOPTRON UNDER THIS LIMITED WARRANTY SHALL BE TO REPAIR OR REPLACE THE COVERED PRODUCT, IN ACCORDANCE WITH THE TERMS SET FORTH HERE. IOPTRON EXPRESSLY DISCLAIMS ANY LOST PROFITS, GENERAL, SPECIAL, INDIRECT OR CONSEQUENTIAL DAMAGES WHICH MAY RESULT FROM BREACH OF ANY WARRANTY, OR ARISING OUT OF THE USE OR INABILITY TO USE ANY IOPTRON PRODUCT. ANY WARRANTIES WHICH ARE IMPLIED AND WHICH CANNOT BE DISCLAIMED SHALL BE LIMITED IN DURATION TO A TERM OF TWO YEARS FROM THE DATE OF ORIGINAL RETAIL PURCHASE.

Some states do not allow the exclusion or limitation of incidental or consequential damages or limitation on how long an implied warranty lasts, so the above limitations and exclusions may not apply to you.

This warranty gives you specific legal rights, and you may also have other rights which vary from state to state.

iOptron reserves the right to modify or discontinue, without prior notice to you, any model or style telescope.

If warranty problems arise, or if you need assistance in using your telescope, mount, or controller contact:

iOptron Corporation  
Customer Service Department  
6E Gill Street  
Woburn, MA 01801  
[www.ioptron.com](http://www.ioptron.com)  
Tel. (866)399-4597  
Fax. (781)935-2860  
Monday-Friday 9AM-5PM EST

NOTE: This warranty is valid to U.S.A. and Canadian customers who have purchased this product from an authorized iOptron dealer in the U.S.A. or Canada or directly from iOptron. Warranty outside the U.S.A. and Canada is valid only to customers who purchased from an iOptron Distributor or Authorized iOptron Dealer in the specific country. Please contact them for any warranty